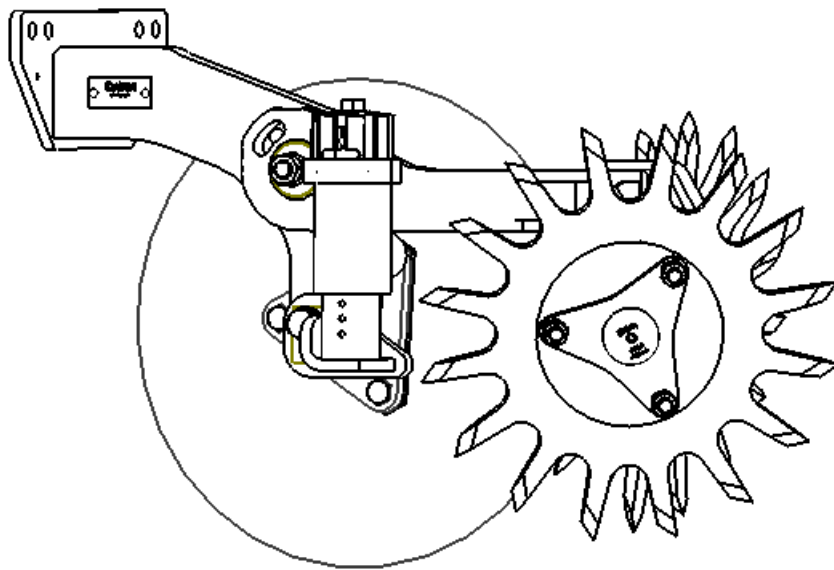


DAWN[®]



Thank you for purchasing the DAWN Model 2002 Floating Row Unit. Please follow the recommended sequence to guide you through the installation and setup of your new planter attachment.

DAWN EQUIPMENT COMPANY INC
P.O. BOX 497, 370 NORTH CROSS
SYCAMORE, ILLINOIS 60178 USA

Tel: (815) 899-8000 Toll-Free: 800-554-0007
Fax: (815) 899-3663
E-mail: sales@dawnequipment.com
Website: www.dawnequipment.com

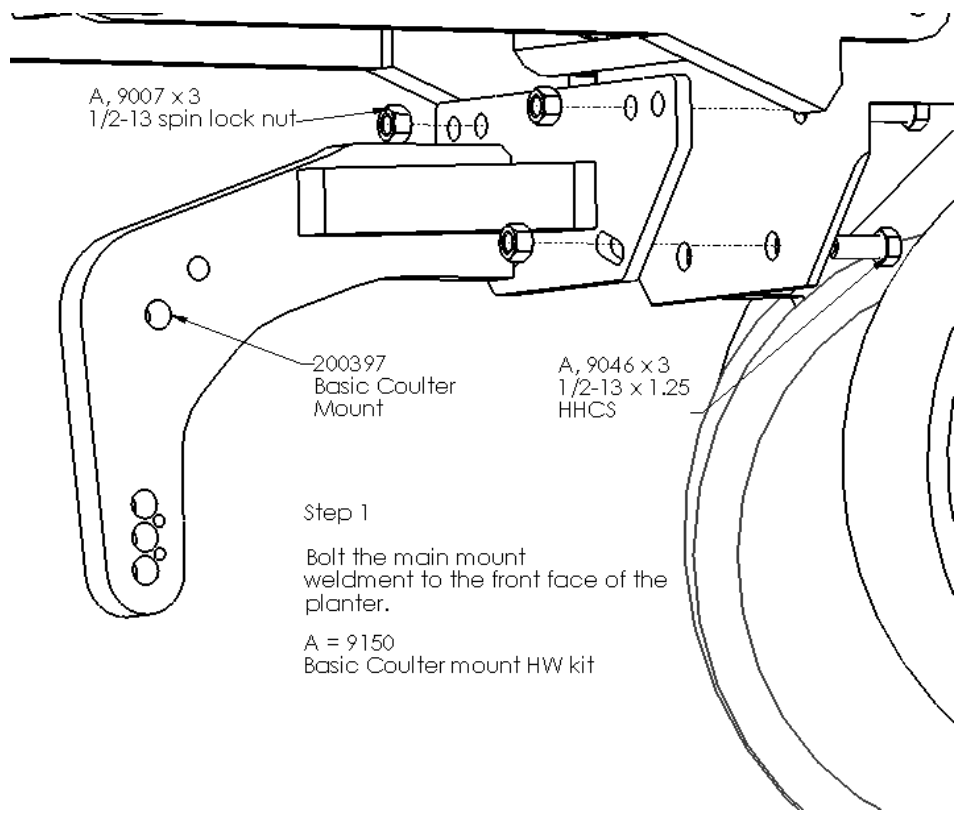
Bolt Torque Chart

This table is based on torque requirements (in ft./lb.) for Grade 5 bolts.

Bolt Diameter	Minimum Torque	Maximum Torque
1/4"	9	11
5/16"	17	20
3/8"	35	42
7/16"	54	64
1/2"	80	96
9/16"	110	132
5/8"	150	180
3/4"	270	324
7/8"	400	480
1"	580	696
1 1/8"	800	880
1 1/4"	1120	1240
1 3/8"	1460	1680
1 1/2"	1940	2200

Note: For self-locking nuts, increase the torque requirements by 15%

1

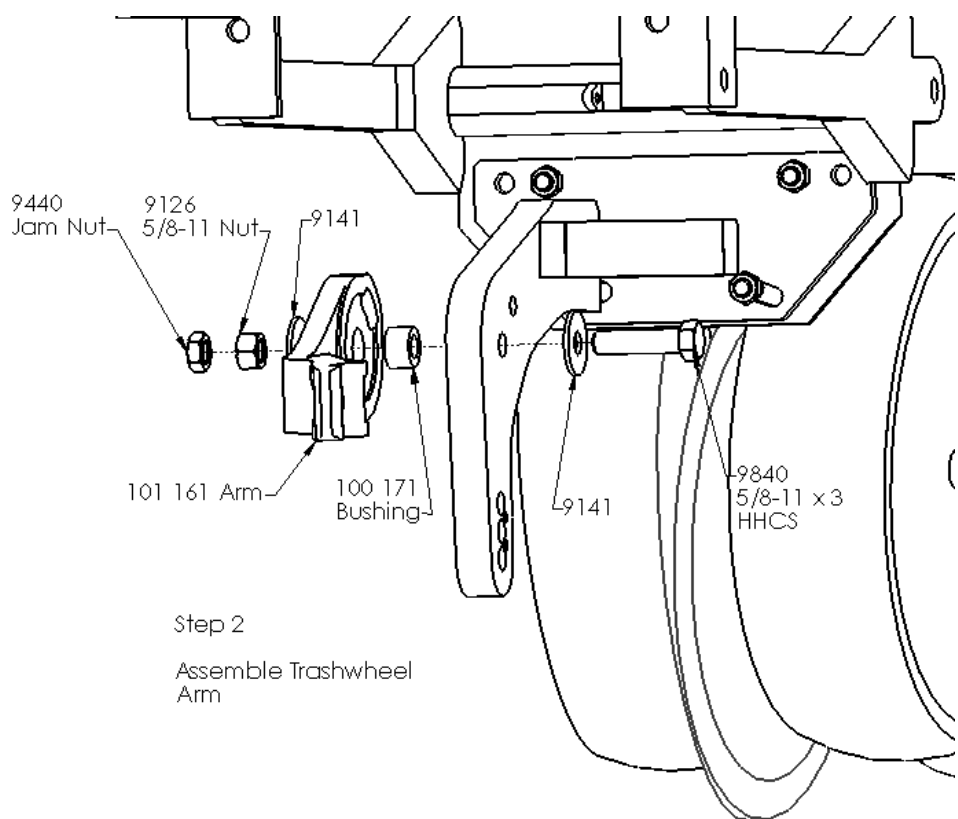


Step 1

Bolt the main mount weldment to the front face of the planter.

A = 9150
Basic Coulter mount HW kit

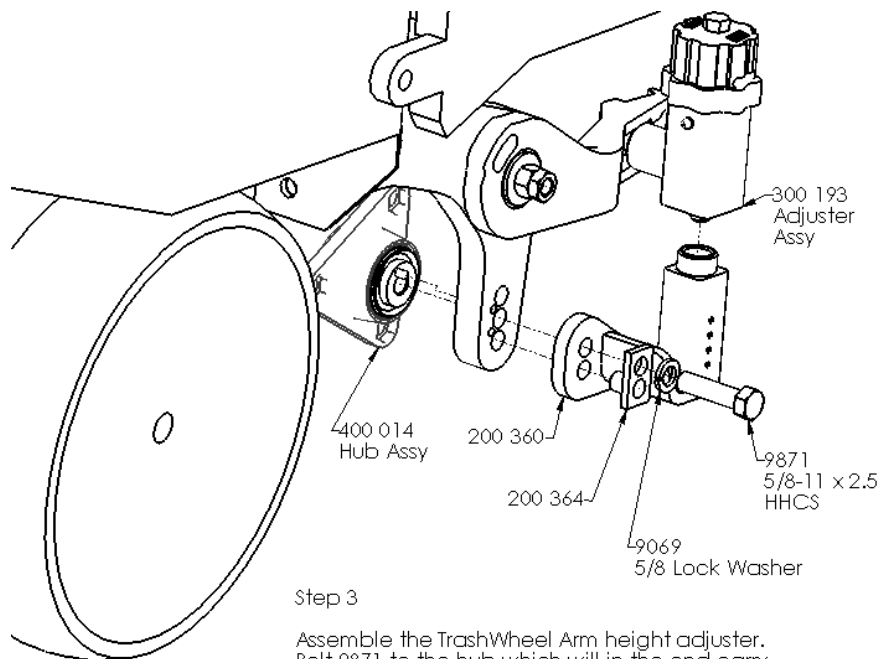
2



Step 2

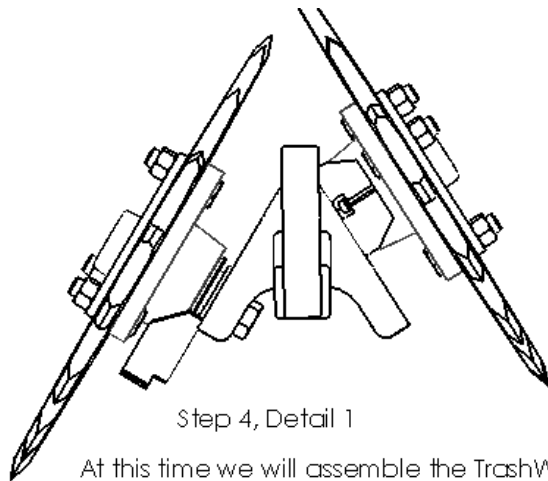
Assemble Trashwheel Arm

3



Step 3

Assemble the TrashWheel Arm height adjuster. Bolt 9871 to the hub which will in the end carry the coulter.



Step 4, Detail 1

At this time we will assemble the TrashWheel, Stem, and Hub assembly. There is an important factor to consider:

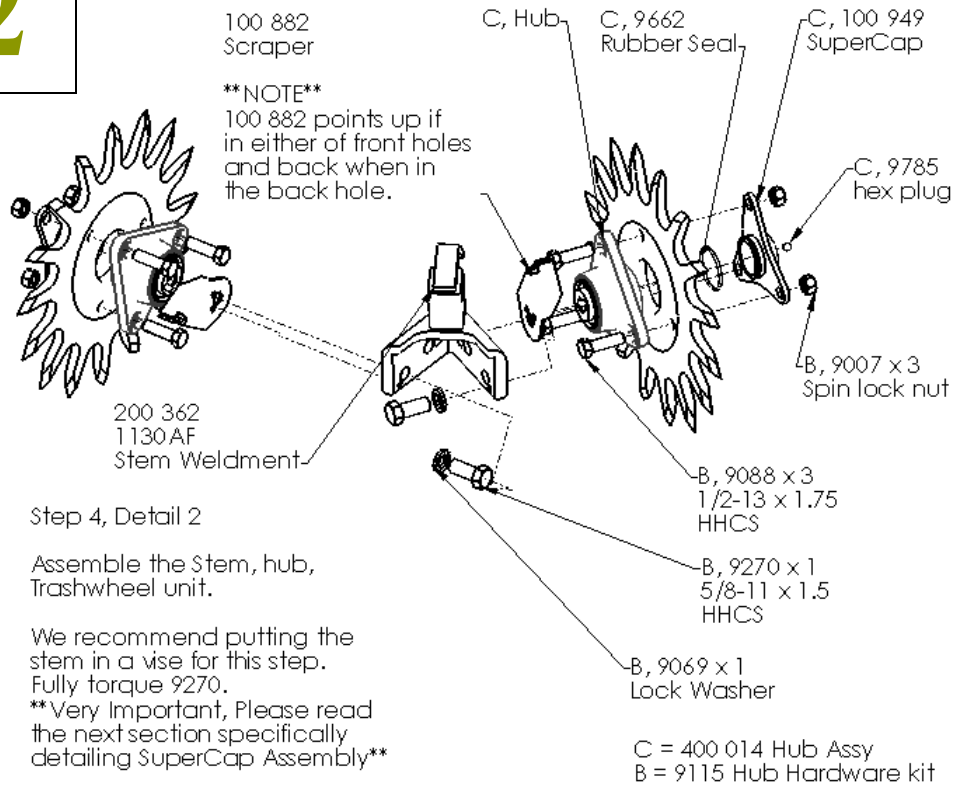
****Are the TrashWheels to be run in the intersecting or offset position?***

This detail (top view) shows the bolt position in the ****RIGHT HAND**** ****OFFSET**** position. In general it is safe to start with your wheels in the offset position. If using the offset position the units on the right hand side of the planter need to be set up as above. The ones on the left would be mirror opposite what is above.

Running the TrashWheels in the ****INTERSECTING**** position is more aggressive, and corresponds to both wheels being swept in the middle hole. If you have ****ANY**** ****Conventional Tillage**** fields it is recommended that you start in the offset position.

4-1

4-2



Step 4, Detail 2

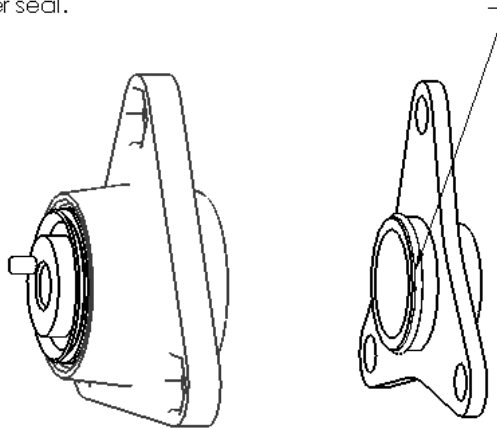
Assemble the Stem, hub,
Trashwheel unit.

We recommend putting the
stem in a vise for this step.
Fully torque 9270.

****Very Important, Please read
the next section specifically
detailing SuperCap Assembly****

Step 4, Detail 3

1. Apply a small amount of grease to the perimeter of
the rubber seal.



4-3

2. ****Very Important****

Do not screw in the hex plug until after the SuperCap has
been bolted onto the assembly. The rubber seal makes an air tight
seal. If you have the plug screwed in and try to insert the SuperCap, you will
likely break the rubber seal and make it ineffective. Taking care in this step will
greatly extend the life of your bearings by preventing dirt from entering the hub.

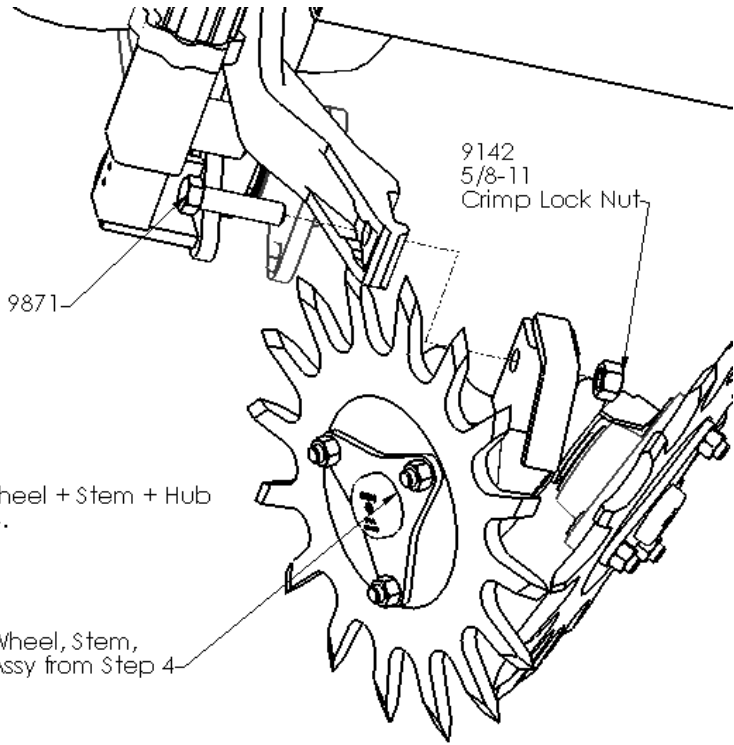
**DO NOT INSERT OR REMOVE THE
SUPERCAP WHILE PLUG IS
INSTALLED.**

5

Step 5

Affix the TrashWheel + Stem + Hub
assy from step 4.

TrashWheel, Stem,
Hub, Assy from Step 4

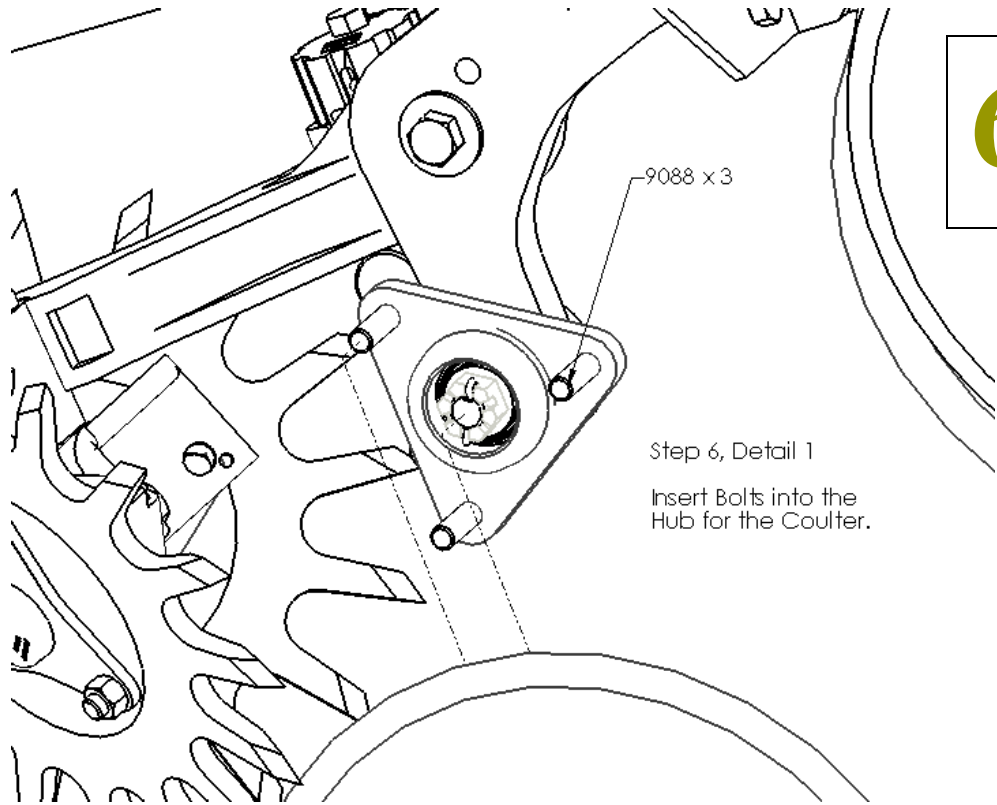


6-1

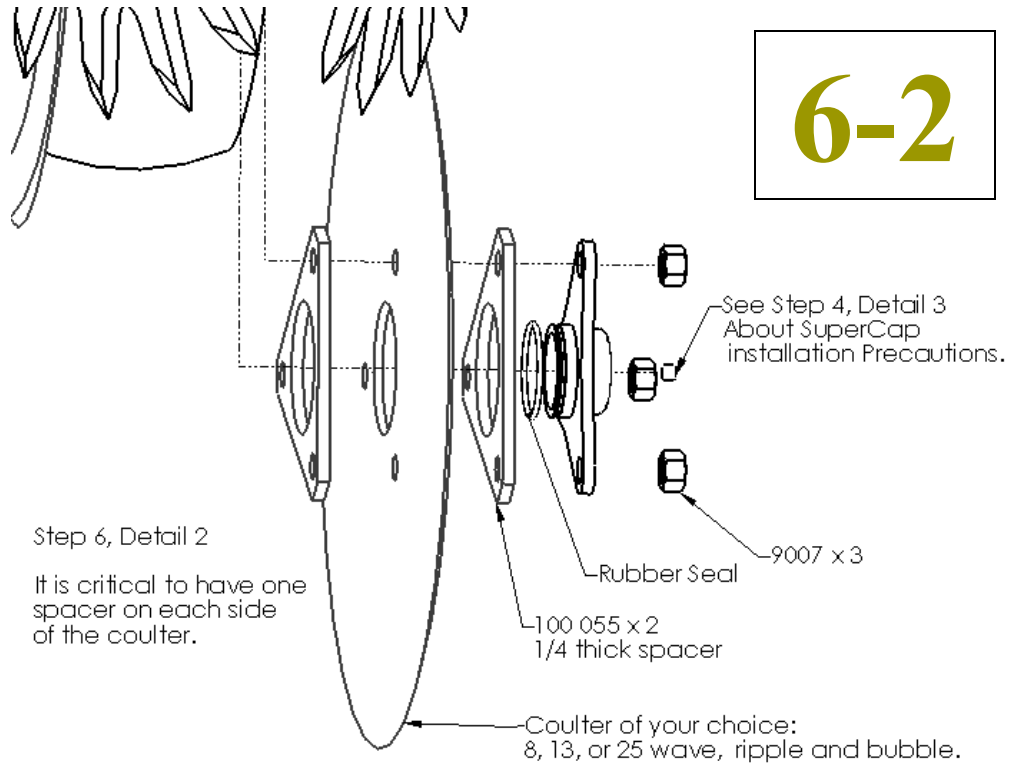
9088 x 3

Step 6, Detail 1

Insert Bolts into the
Hub for the Coulter.



6-2



Step 6, Detail 2

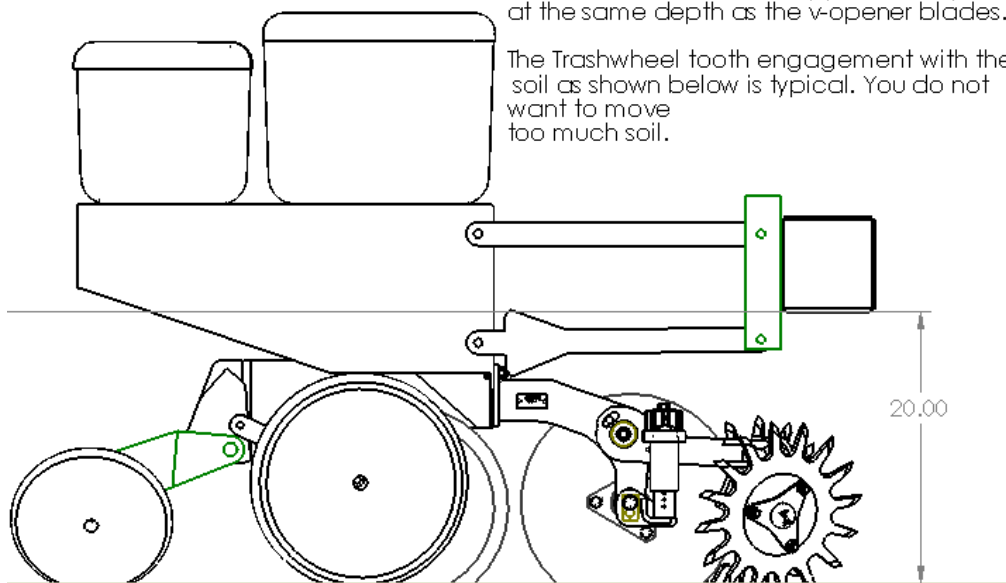
It is critical to have one spacer on each side of the couler.

7

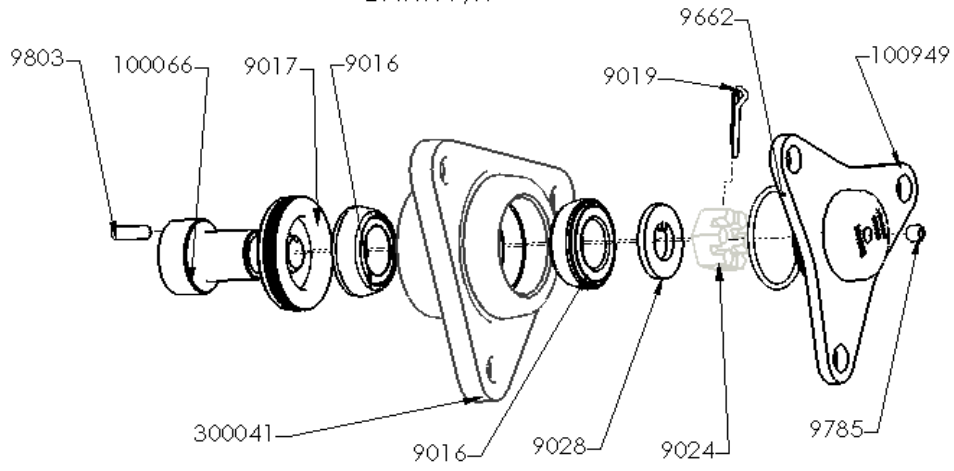
Step 7

Adjust the frame height of your planter. In the middle hole of the three, the couler will be approximately at the same depth as the v-opener blades.

The Trashwheel tooth engagement with the soil as shown below is typical. You do not want to move too much soil.

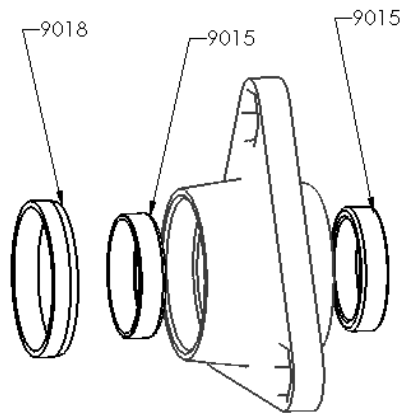


400 014 ASSY
DAWN P/N



9806, grease fitting
**Remove and replace with
plug when not in use**

300 041
DAWN P/N



ΔΑΩΝ Λιμιτεδ Ωαρραντυ Αγρεεμεντ

The following warranties with respect to new DAWN Equipment Company products, excepting as hereafter provided, is made by DAWN to Dealers (“Dealers”) authorized by DAWN to sell the products involved and each selling Dealer, in turn, make such warranties to the original retail purchaser (the “purchaser”).

A. Duration and Extent of Warranty

1. Products, except all working, moving, moving and all or any parts subject to wear, except as hereafter provided, which are defective in materials or workmanship as delivered to the Purchaser by a Dealer will be repaired by a Dealer or replaced by DAWN, only, as DAWN elects, without charge for materials or labor, if such defect appears in not more than 12 months, or from and after the date of delivery to the Purchase by the Dealer.
2. Those working and moving parts consisting of Quick Lift, bearings and hub assemblies are warranted for repair or replacement as DAWN elects for a period not to exceed six month or 1,000 working hours, whichever comes first, from date of delivery to the Purchaser by Dealer.
3. DAWN warrants that the Trashwheels planter attachment Wheel (Dawn. #200-015) will not bend or break during its useful lifetime.
4. Liability of DAWN for defective parts or material is specifically limited to the value of the parts or materials, only.
5. All parts or materials requiring warranty work MUST be returned by delivery to the selling Dealer for repair or for deliver to DAWN within thirty (30) days of occurrence of the defect or failure of the part or material, all freight prepaid by the Dealer. Upon completion of the warranty work, DAWN will ship parts or material to Dealer, freight prepaid by DAWN.
6. All decisions by DAWN pertaining to warranty are final.

B. Warranty Exclusions

DAWN will not be responsible for any of the following:

1. Defects or damage resulting from use, repairs or service performed in a manner not approved by DAWN or from repairs or service performed by someone other than an authorized DAWN Dealer service department (after approval from DAWN) or DAWN to repair or replace the product involved.
2. Defects, damage or failure resulting from any alteration or additions done in a manner not approved by DAWN.
3. Defects, damage or failure or depreciation resulting from wear and tear, accident, misuse, negligence, improper maintenance or improper protection and storage.
4. INCIDENTAL OR CONSEQUENTIAL DAMAGES, INCLUDING BUT NOT LIMITED TO, LOSS OF PROFITS, LOSS OF TIME, LOSS OF CROPS, INCONVENIENCE, LOSS OF USE OF THE PRODUCT OR OTHER MACHINERY, EQUIPMENT OR VEHICLE USED WITH THE PRODUCTS, COST OF RENTALS OR REPLACEMENT OF THE PRODUCTS OR OTHER COMMERCIAL LOSS.

C. Remedies Exclusive: NO Other Warranties

The obligations of DAWN and the Dealers are limited to the obligations set forth in this Limited Warranty. THIS LIMITED WARRANTY IS IN LIEU OF ALL OTHER WARRANTIES OF DAWN, AND THE DEALERS, EXPRESSED OR IMPLIED. WARRANTIES BY DAWN OR THE DEALER OF CONDITION QUALITY, MERCHANTABILITY OR FITNESS FOR A PARTICULAR PURPOSE ARE EXCLUDED, AS ARE AL OTHER REPRESENTATIONS

BY DAWN AND THE DEALERS TO THE PURCHASE OR USER AND ALL OTHER OBLIGATIONS OR LIABILITIES OF DAWN AND THE DEALERS. NO OTHER PERSON IS AUTHORIZED TO GIVE ANY OTHER WARRANTY OR TO ASSUME ANY OTHER LIABILITY ON BEHALF OF DAWN OR THE DEALERS. THIS LIMITED WARRANTY MAY NOT BE TRANSFERRED BY THE PURCHASER TO ANY SUBSEQUENT OWNER.

D. The instruction manual supplied with the Product contains important maintenance and service information. Read the manual and follow the recommendations contained herein. Please remember that failures due to improper maintenance or service are not covered by the Limited Warranty.

DAWN Equipment Company reserves the right to make changes in design or specifications at any time without obligation to purchasers or equipment and components previously sold. This warranty shall not be altered or changed in any way.

©1995 (8035 Rev. 1, Nov. 1994), DAWN Eq. Company P.O.Box 497, 370 North Cross,
Sycamore, IL 60178

