

# Dawn Model 1201 Curvetine Closing Wheel Assembly and Operation Manual



**DAWN**®

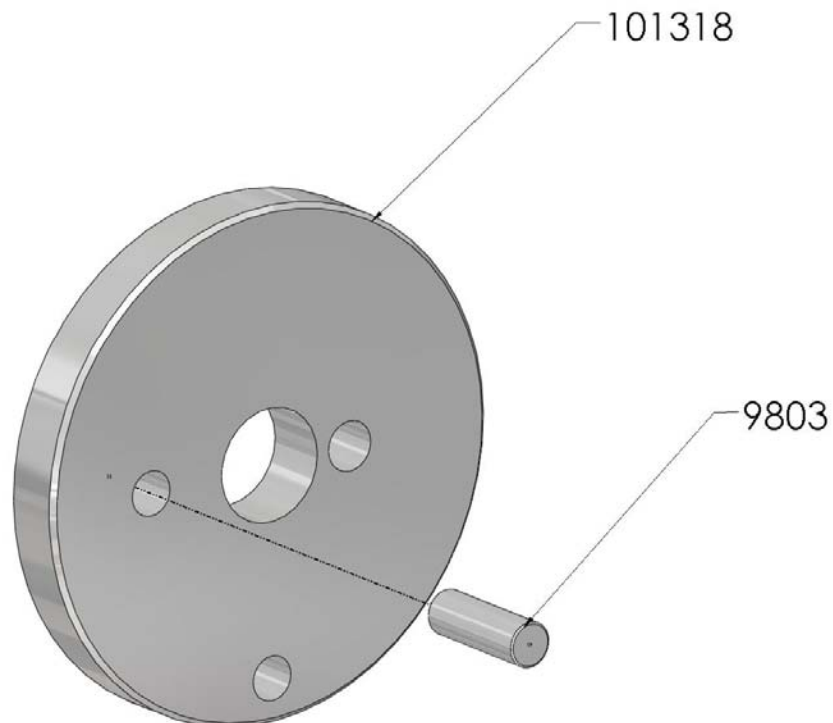
For installation on JD Planters with bolt on (not stud) closing wheels

**Parts included in kit**

- 1. Wheel with bearings and cap installed, Dawn part # 400111**
- 2. Large washer, Dawn part # 101318**
- 3. Press pin, Dawn part # 9055**
- 4. 5/8ths bolt, Dawn part # 9101**
- 5. Lock washer, Dawn part # 9069**

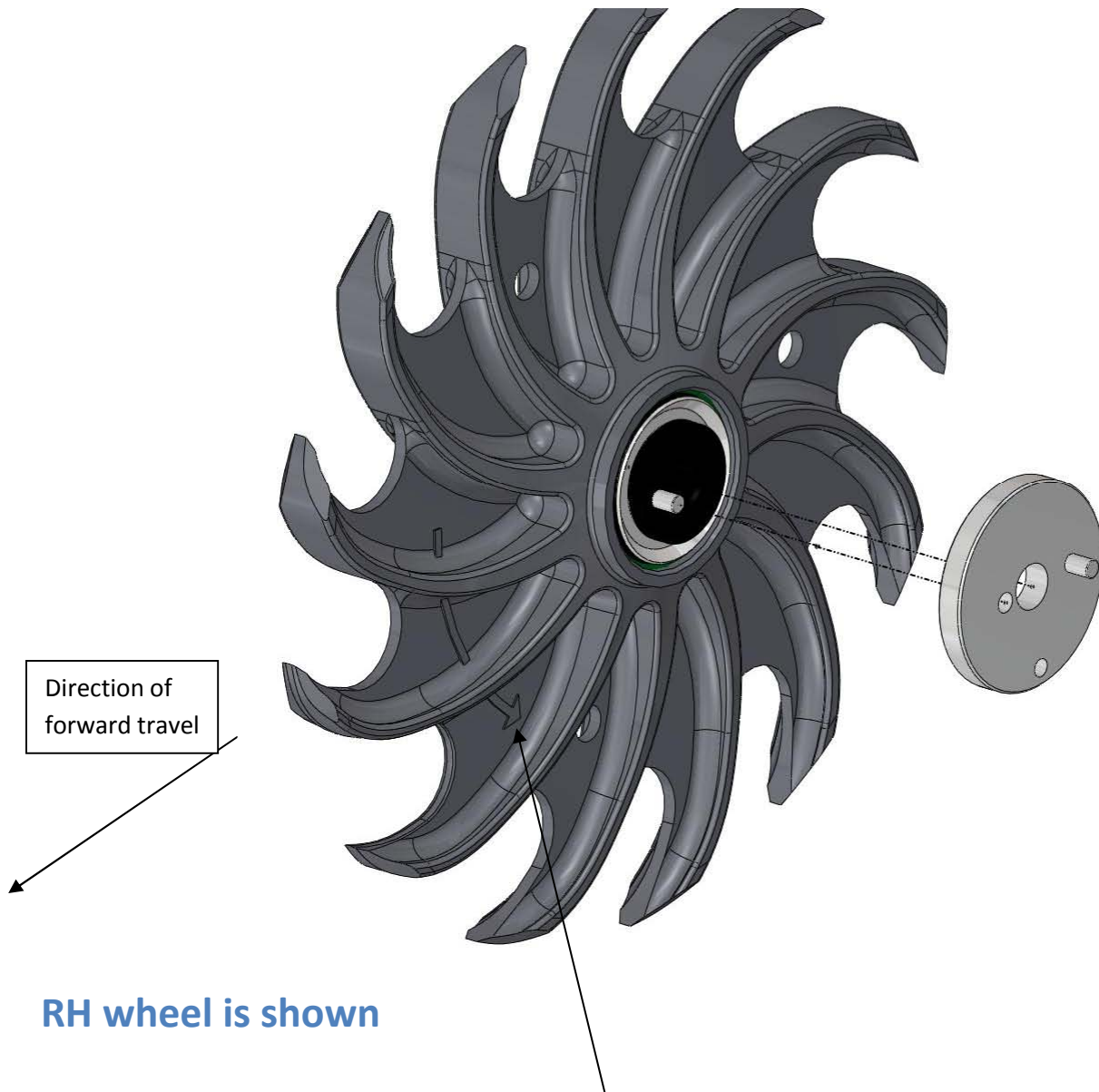
**Step 1**

- Press pin into large washer into the indicated hole



## Step 2

- Place the washer and pin on to the wheel so that the pin that is already installed on the wheel goes in to the small hole that is closest to the large hole in the washer

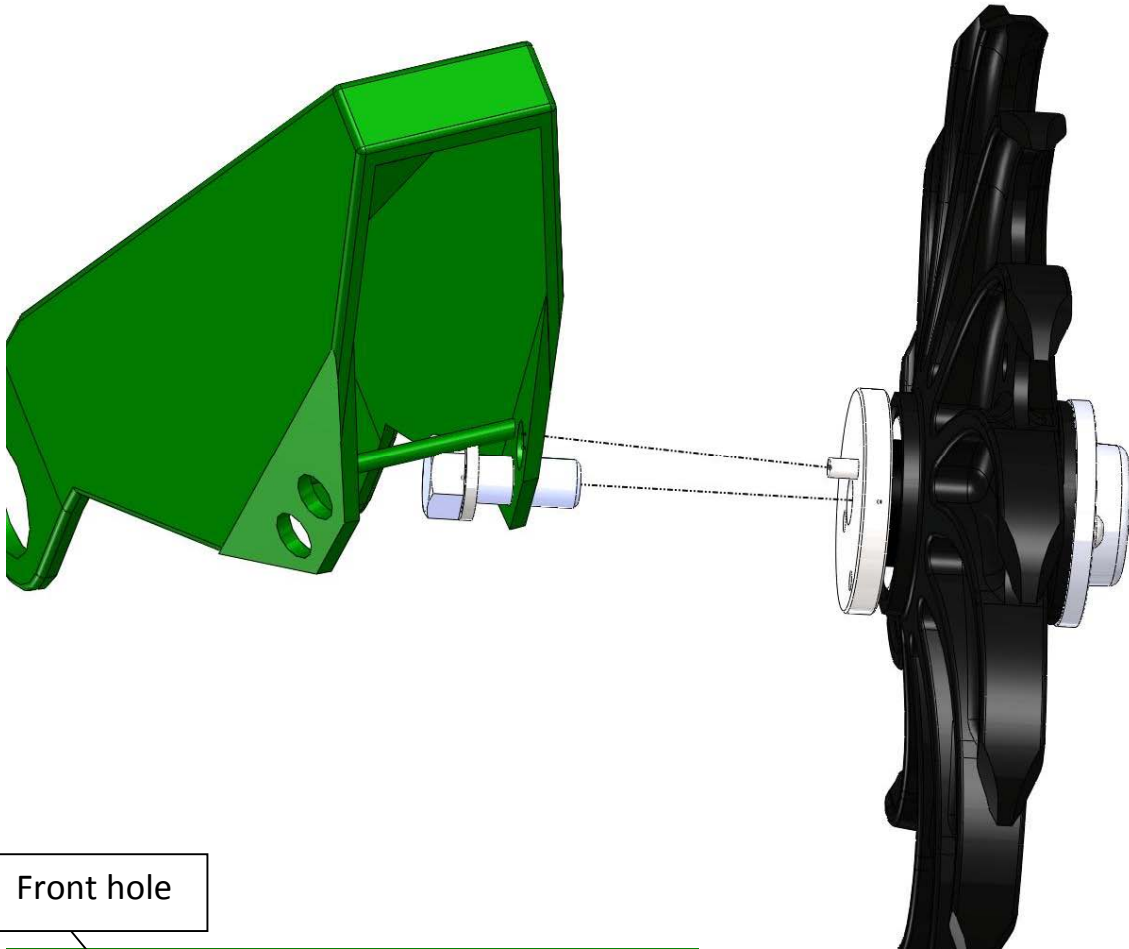


**\*\*IMPORTANT\*\***

Note and observe, arrow must point in direction the wheel will spin during operation.

### Step 3

- Use the bolt and lock washer to secure the wheel on to the row unit.
- **\*\*IMPORTANT\*\*** Make sure you bolt the wheel on to the front of the two holes.
- When doing this align the unit in a way that the pin you pressed in to the washer on the first step is placed in the back hole on the row unit.



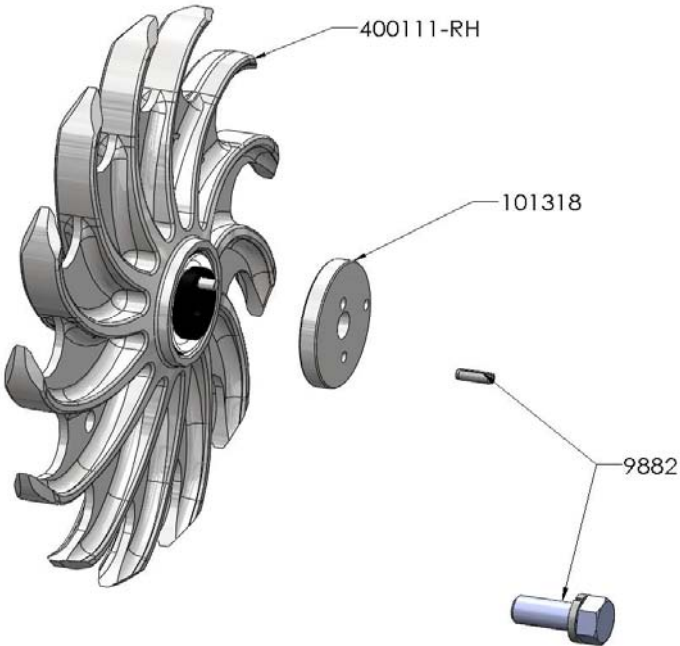
Front hole



Back hole

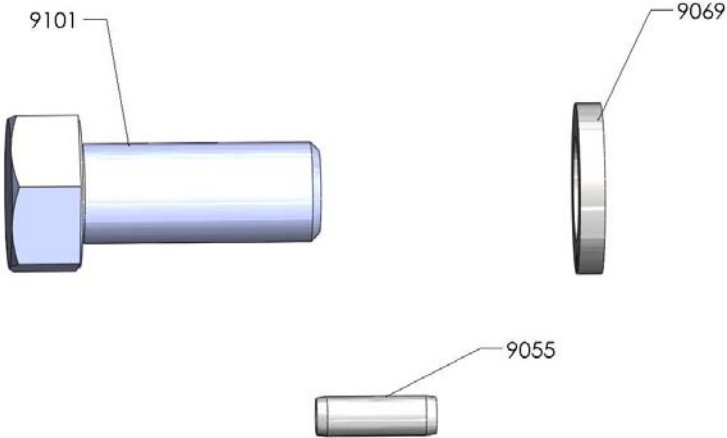
Section view to show proper installation

# 1201

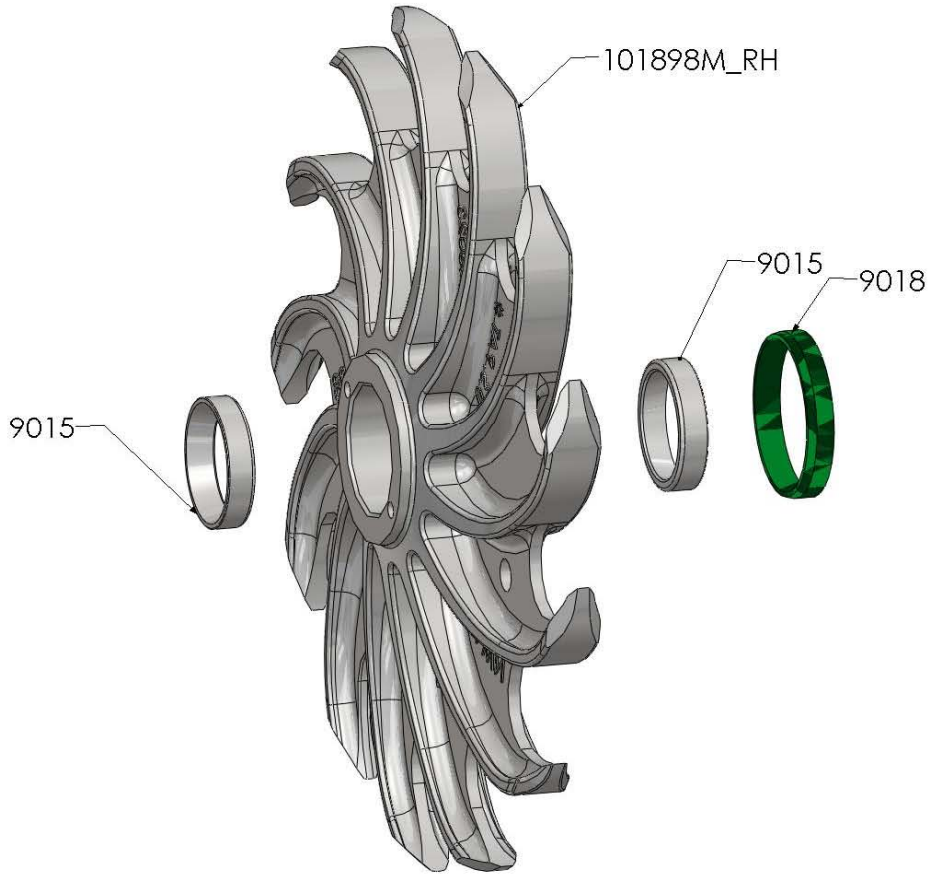


---

# 9882



300290 (RH Wheel)  
300291 (LH Wheel)



RH wheel shown

## Notes

- Dawn recommends Mobil XHP 222 or equivalent grease
- We strongly recommend that the final step in installation be inserting the grease zerk (provided) and fill/purge with grease to 100%
- It is not possible to damage the triple lip seal by purging, after purging wipe off excess grease
- In rocky areas we strongly recommend that you operate the Curvetines with the stainless steel pipe plug installed
- In less rocky or rough areas it is customer option to run with grease zerk installed, both the grease zerk and pipe plug are provided in the kit
- If liquid fertilizer applications systems are used where there is a tube dripping either directly in front or behind the wheel it is recommended that you leave the grease zerk installed and grease more often