

Dawn Model 1301 Curvetine Closing Wheel Assembly and Operation Manual



DAWN®

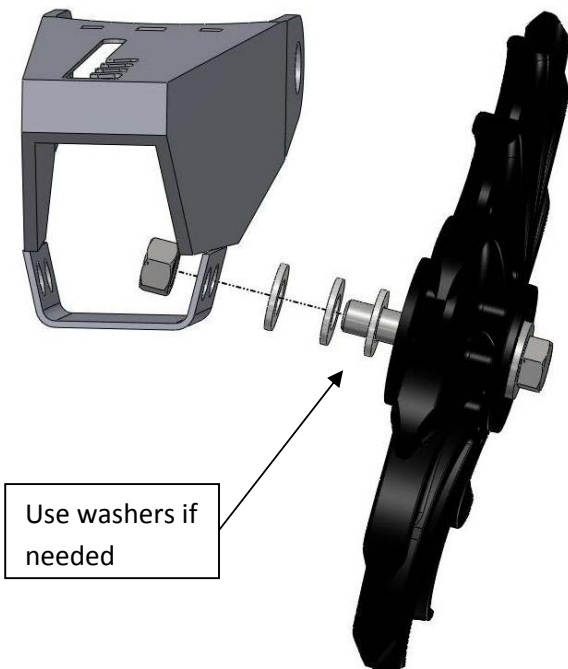
For installation of Dawn Equipment Curvetines onto Kinze Row units

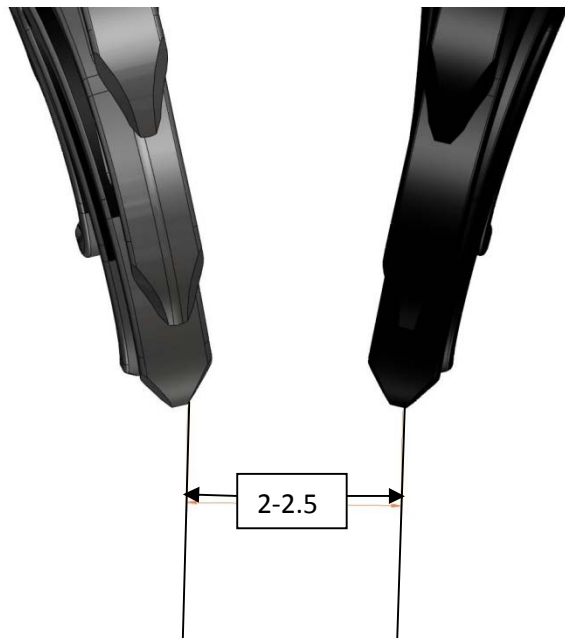
Parts included in 1301 L/R kit

- 400114 L/R , Curvetine assembly
- 101315, Supercap
- 9880, 2 pcs, Button head screw for supercap
- 90010, 2 pcs, Lock washer for supercap
- 9662, O-Ring for supercap
- 9806, Grease zerk
- 9785, Pipe plug
- 9032, 3 pcs, 5/8 flat washer

Step 1

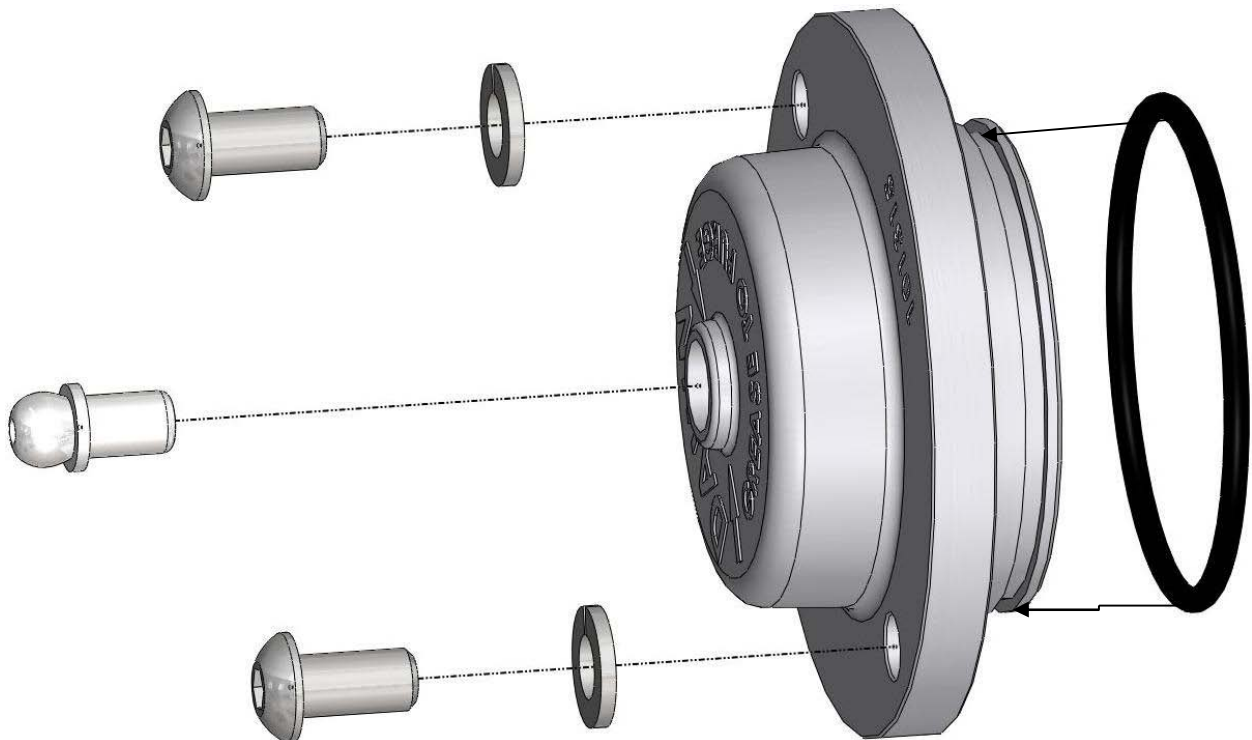
- Attach entire unit to Kinze row unit.
- **** IMPORTANT**** Attach the unit to the front of the two holes on the unit
- Use the supplied washers and shims so that when two wheels are installed the bottoms of them are 2- 2.5 inches apart. Typically this number should be approximately equal to your planting depth
- The washers go on the outside not under the nut.
- ***The bolt should be torque to 140 ft-lbs. Use a manual wrench not an impact wrench***
- Be careful not to dislodge the locking washer and pins as this hold the correct tension on the bearings and should not be adjusted





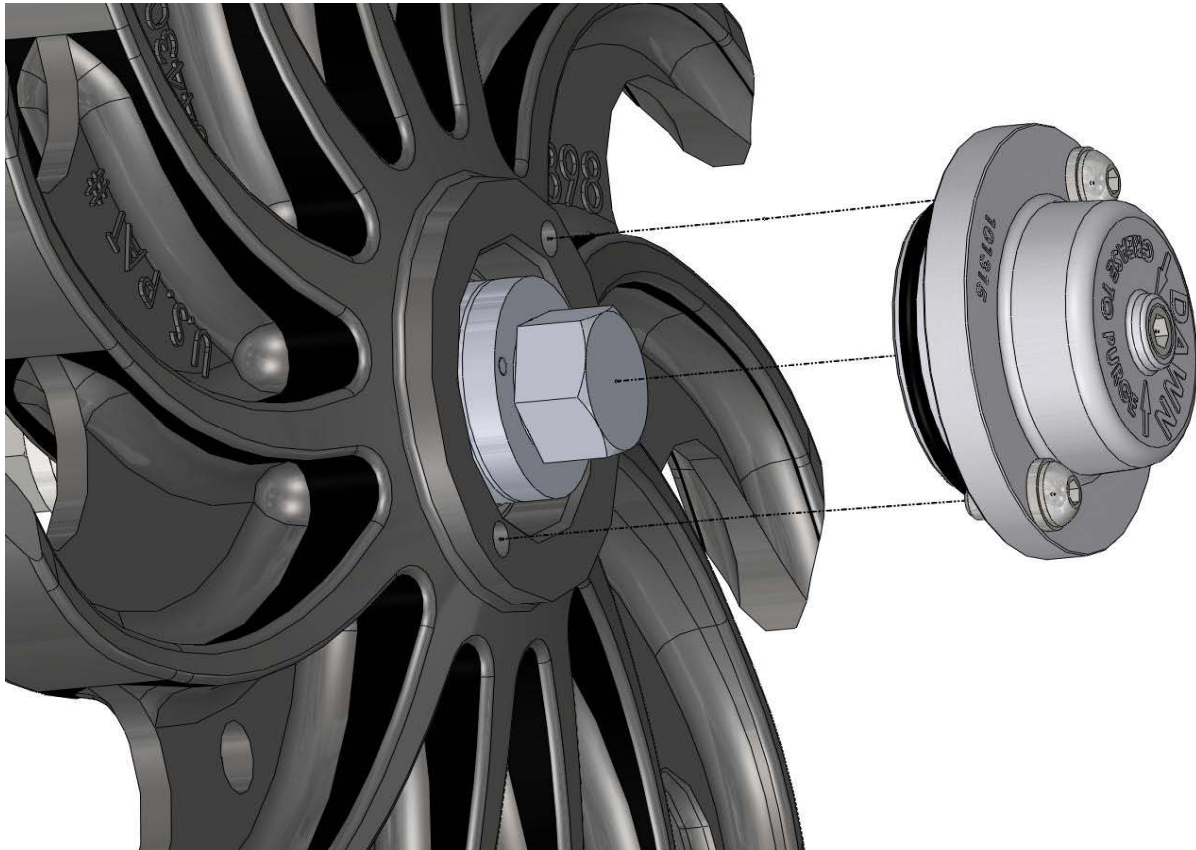
Step 2

- Place O-ring onto the supercap, there is a groove in the cap for the o-ring to fit onto
- Place grease zerks into center hole and button head screws and washers in to outer holes
- Be careful not to damage the o-ring as that will shorten the life of the bearings



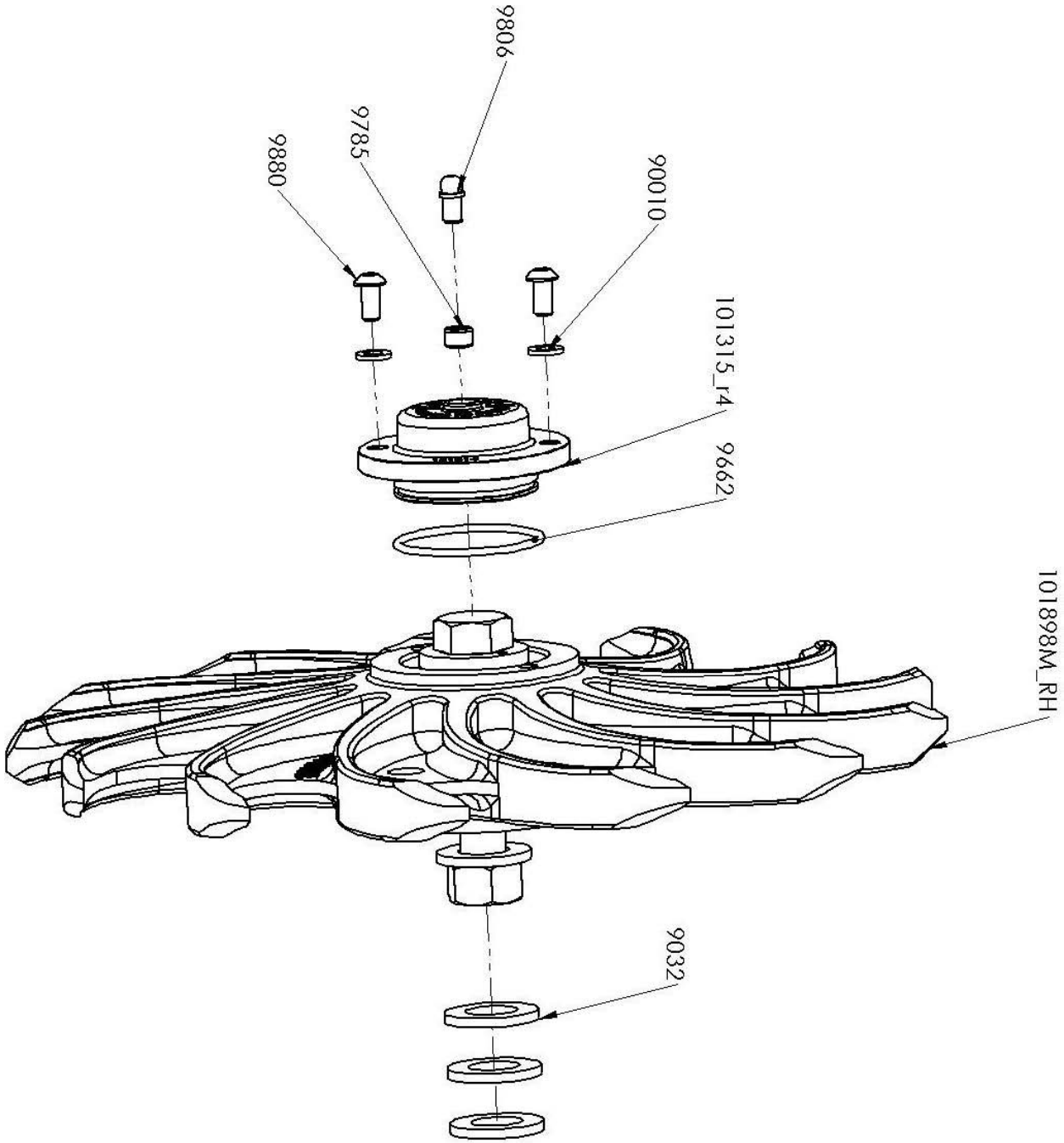
Step 3

- Bolt the supercap onto the main wheel unit
- Wipe grease with finger around o-ring before installation

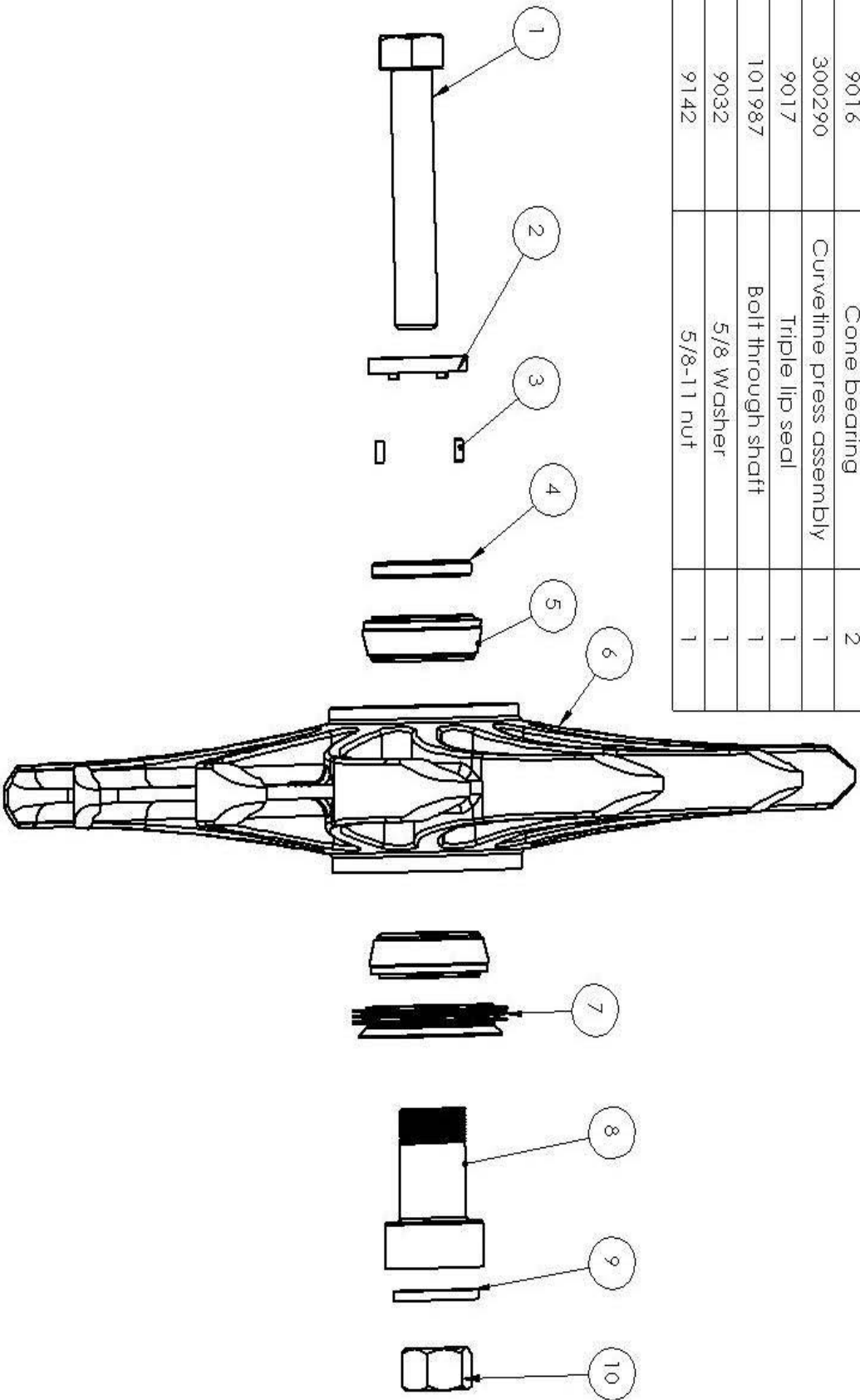


Notes

- Dawn recommends Mobil XHP 222 or equivalent grease
- ***The final step in installation is inserting the grease zerk (provided) and purge with grease to 100%***
- It is not possible to damage the triple lip seal by purging. After purging wipe off excess grease
- In rocky areas we strongly recommend that you operate the Curvetines with the stainless steel pipe plug installed
- In less rocky or rough areas it is customer option to run with grease zerk installed, both the grease zerk and pipe plug are provided in the kit
- If liquid fertilizer applications systems are used where there is a tube dripping either directly in front or behind the wheel it is recommended that you leave the grease zerk installed and grease more often

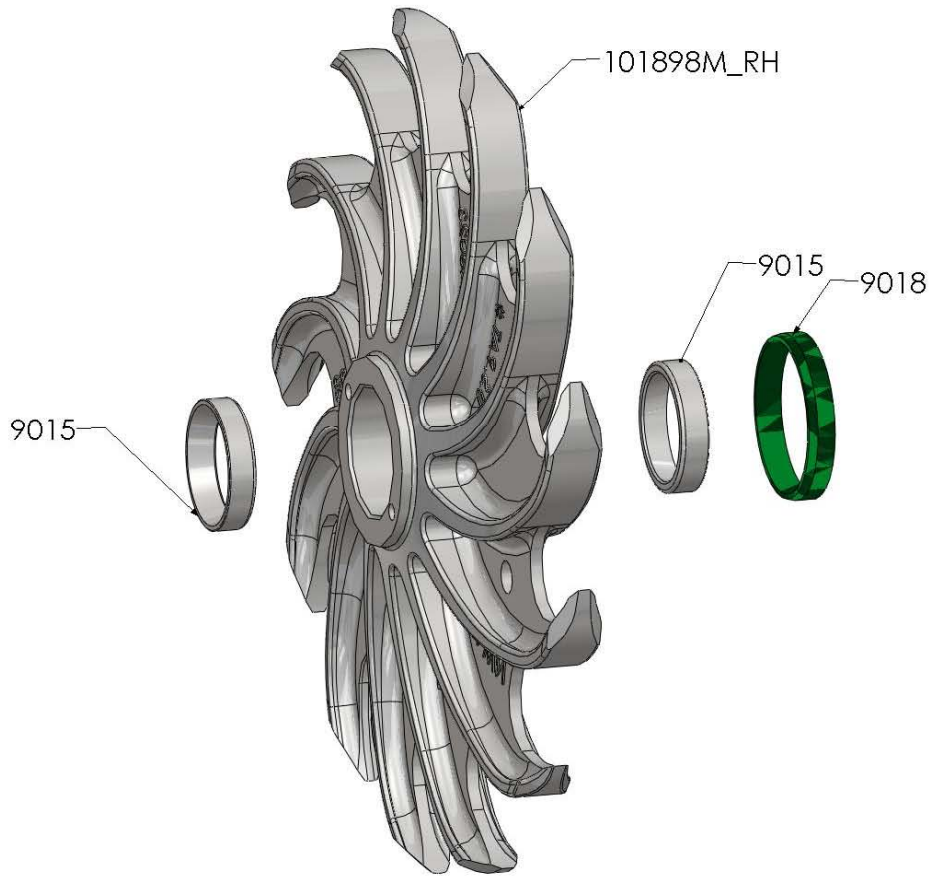


ITEM NO.	PART NUMBER	DESCRIPTION	QTY.
1	9268	HHCS .58X3.1/	1
2	101989	Washer	1
3	102009	.125 X 7/16 pin	2
4	101988	Washer	1
5	9016	Cone bearing	2
6	300290	Curvetine press assembly	1
7	9017	Triple lip seal	1
8	101987	Bolt through shaft	1
9	9032	5/8 Washer	1
10	9142	5/8-11 nut	1



400114

300290 (RH Wheel)
300291 (LH Wheel)



RH wheel shown