

Dawn Model 1302 Curvetine Closing Wheel Assembly and Operation Manual

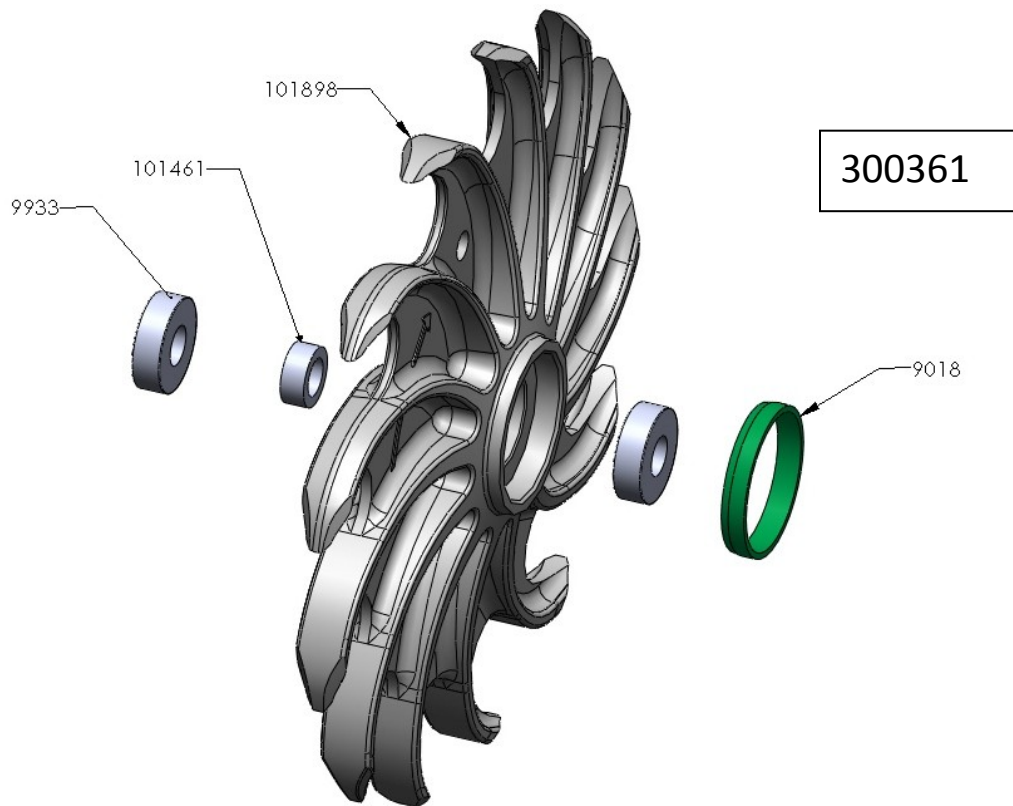


DAWN®

For installation on 7000 JD planters

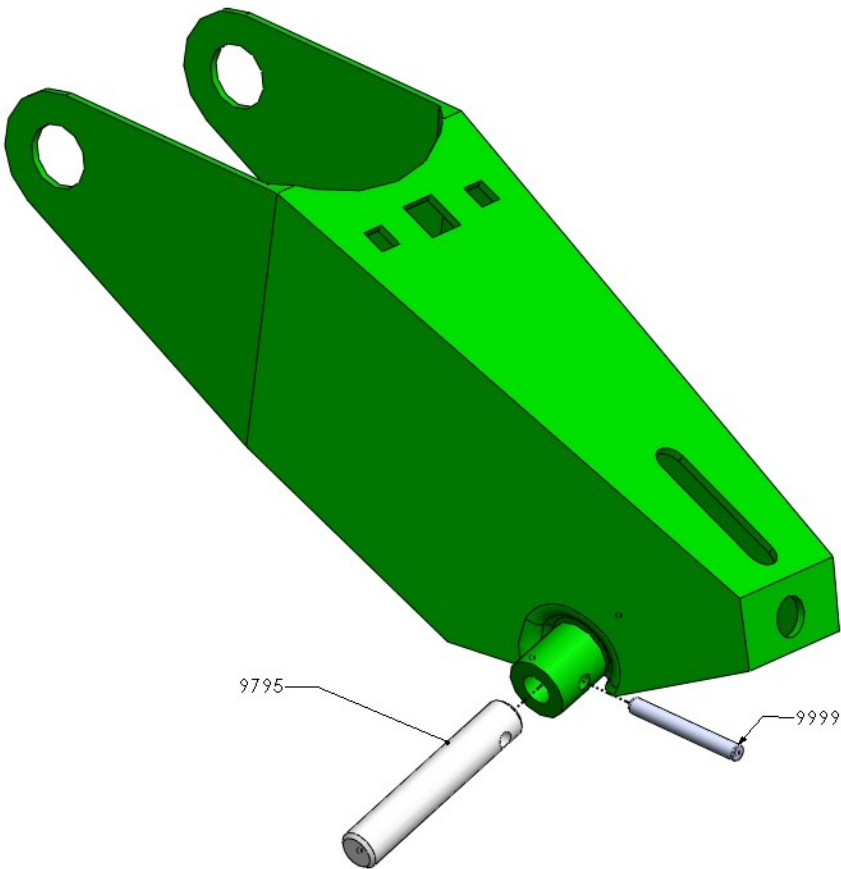
Parts included in kit

1. Wheel with bearings and cap installed, Dawn part #300361
2. Triple lip seal with spacer, Dawn part # 300283
3. Attachment stud, Dawn part # 9795
4. Press pin, Dawn part # 9999
5. Super Cap, Dawn part # 101315
6. Screws for cap, Dawn part # 9880
7. O-ring, Dawn part # 9662
8. Flat washer, Dawn part # 9032
9. Lock washer for cap, Dawn part # 90010
10. Grease zerk, Dawn part # 9806



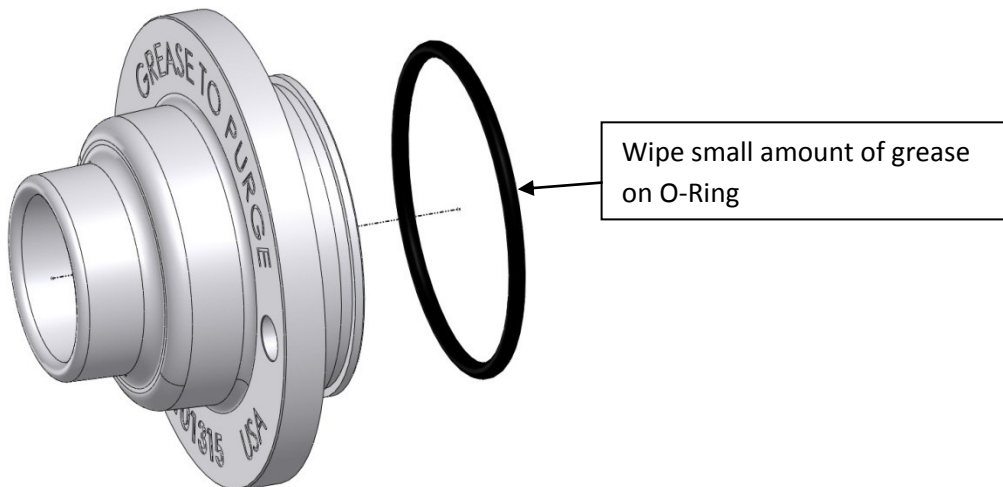
Step 1

- Insert stud into tail piece



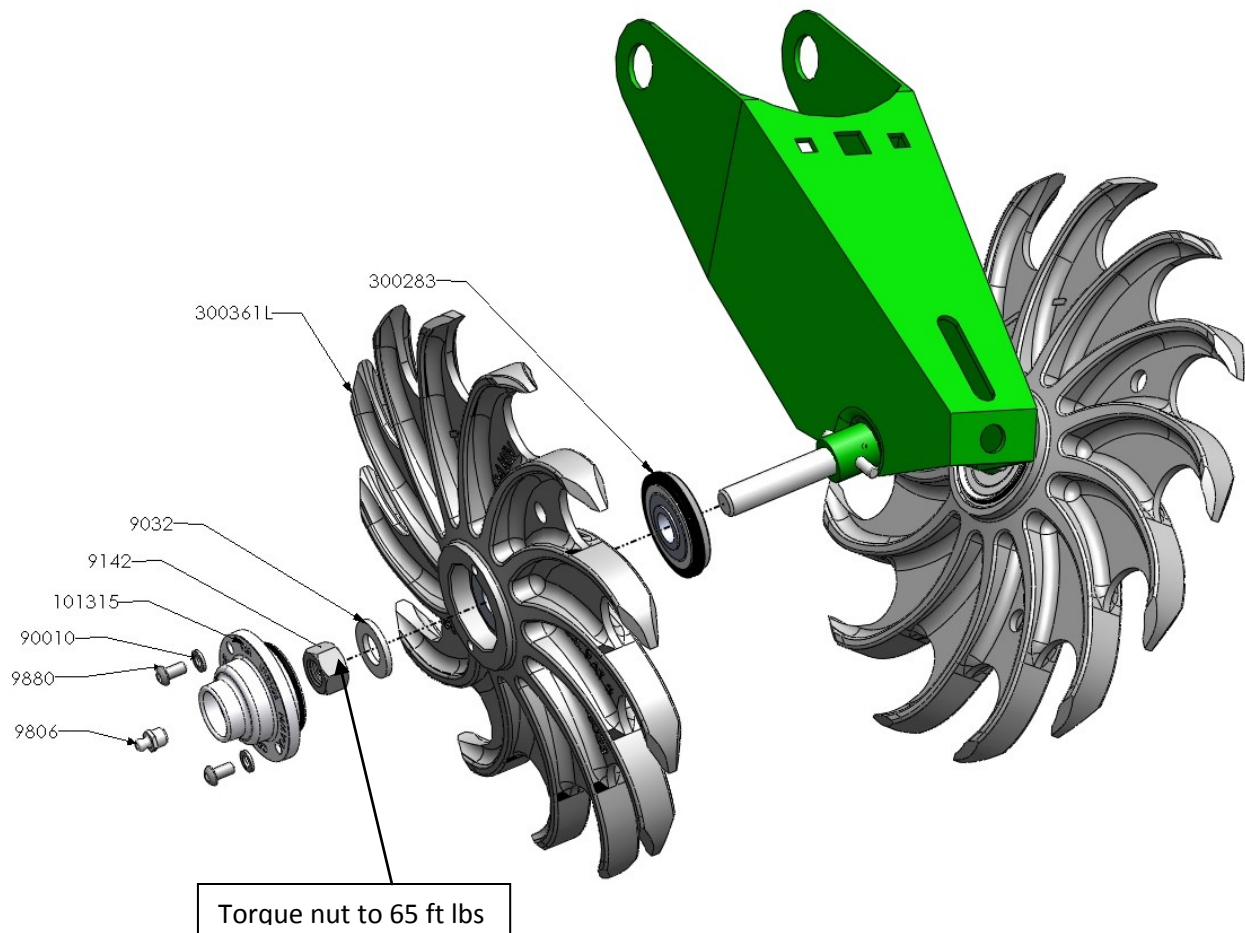
Step 2

Install O-Ring



Step 3

- Attach Curvetine to tail piece.



****IMPORTANT****

Note and observe, arrow must point in direction the wheel will spin during operation

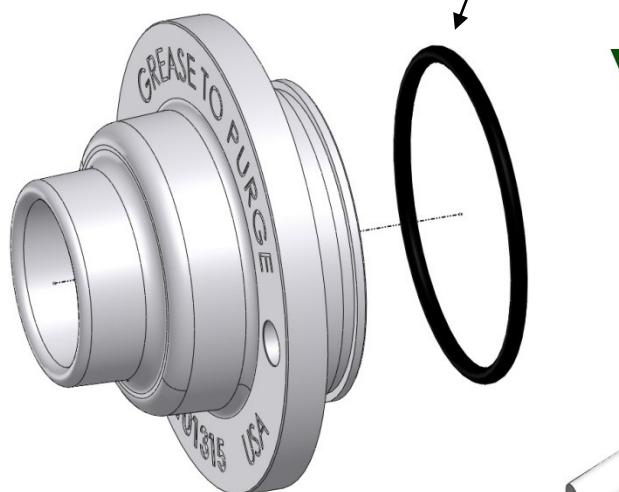
For Installation on 7200 Planters

Parts included in kit

1. Wheel with bearings and cap installed, Dawn part #300361
2. Triple lip seal with spacer, Dawn part # 300284
3. Press pin, Dawn part # 9999
4. Super Cap, Dawn part # 101315
5. Screws for cap, Dawn part # 9880
6. O-ring, Dawn part # 9662
7. Lock washer for cap, Dawn part # 90010
8. Grease zerker, Dawn part # 9806

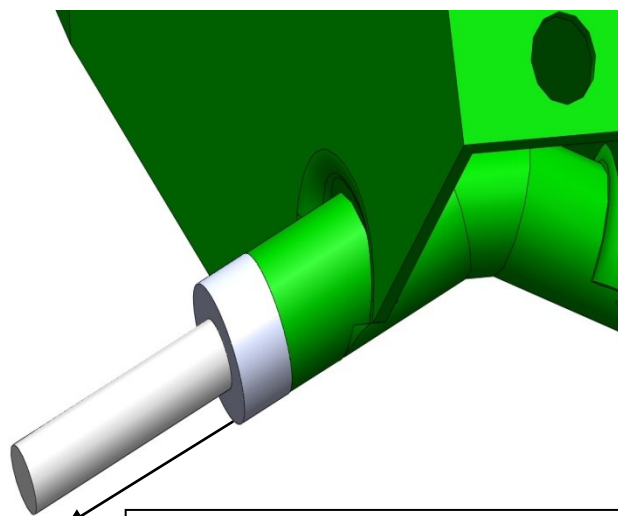
Step 1

Install O-Ring



Step 2

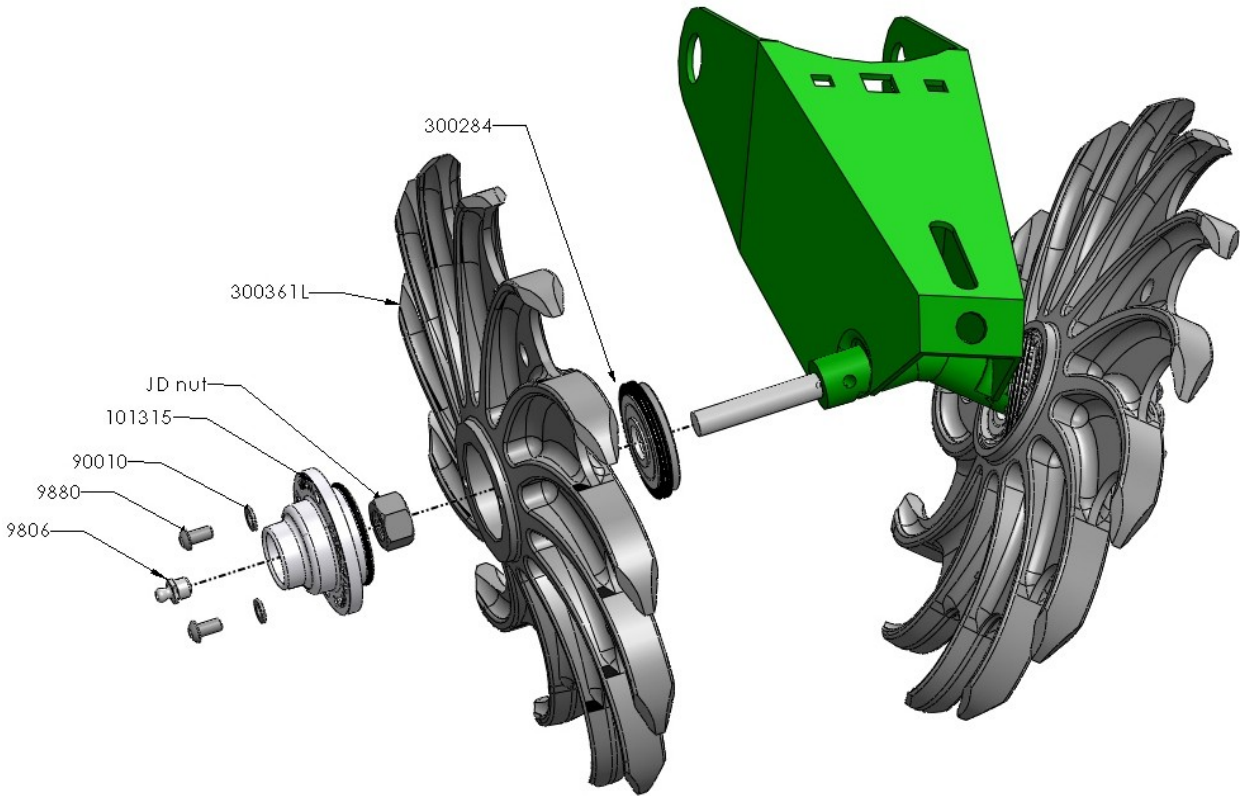
Remove Spacer



Must have model 7200 planter with removable spacer to use the 1302 Wheel. This spacer must be removed. May be painted green or plated.

Step 3

Attach Curvetine



BE SURE TO USE THE JOHN DEERE NUT THAT YOU ALREADY HAVE

Additional Instructions

- Dawn recommends Mobil XHP 222 or equivalent grease
- You must fully purge grease through hub after assembly until grease purges out back of seal.
- It is not possible to damage the triple lip seal by purging, after purging wipe off excess grease
- If liquid fertilizer applications systems are used where there is a tube dripping either directly in front or behind the wheel it is recommended that you grease more often
- The Curvetine requires much less down pressure than the rubber wheels, so start very light and ass more pressure as needed
- The Curvetine will need a few acres to break in by wearing the paint off the teeth