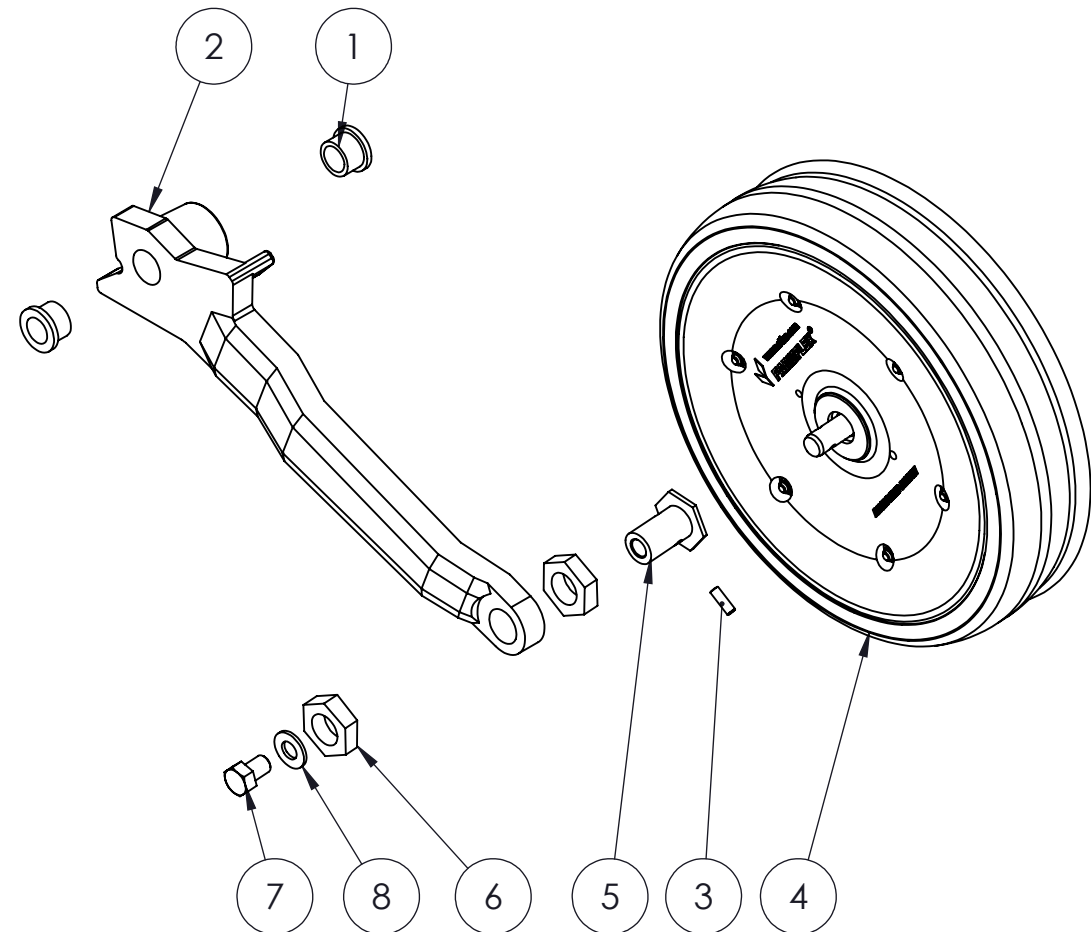


ITEM NO.	PART NUMBER	DESCRIPTION	QTY.
1	300267	Push Rod for Spring	1
2	9019	Cotter Pin	3
3	301320	Mount Press Assembly	1
4	101367R02	Collar Bushing	1
5	101358_R1	Spring	1
6	102141	Collar Guide	1
7	102142	Collar Nut	1
8	9016	Timken Tapered Roller Bearing	4
9	9017	Triple Lip Seal	1
10	101363	Rubber Spacer	2
11	9913	3/8 Flange Lock Nut	3
12	100066R01	Shaft	1
13	9803	1/4 x 3/4 Grooved Pin	1
14	9785	Pipe Plug	3
16	9880_R1	1/4-20 x 5/8 HHCS	6
16	101315_R2	Super Cap	3
17	9662	O-Ring	3
18	9024	Castle Nut	4
19	9028	Toung Washer	5
20	9910	Tapered Roller Bearing	2
21	9907_R1	Tripple Lip Seal	2
22	9961	3/8-16 x 1 SHCS	6
23	101646r2	Main Pivot Shaft	1
24	300413R	Main Body Press Assembly	1
25	301317	Blade Assembly	1
26	101647_r2	Wiper Wheel Shaft	1
27	101360r2	Spring	1
28	300266	Wiper Wheel Assembly	1
29	9918	3/8-16 x 1.5 HHCS	3

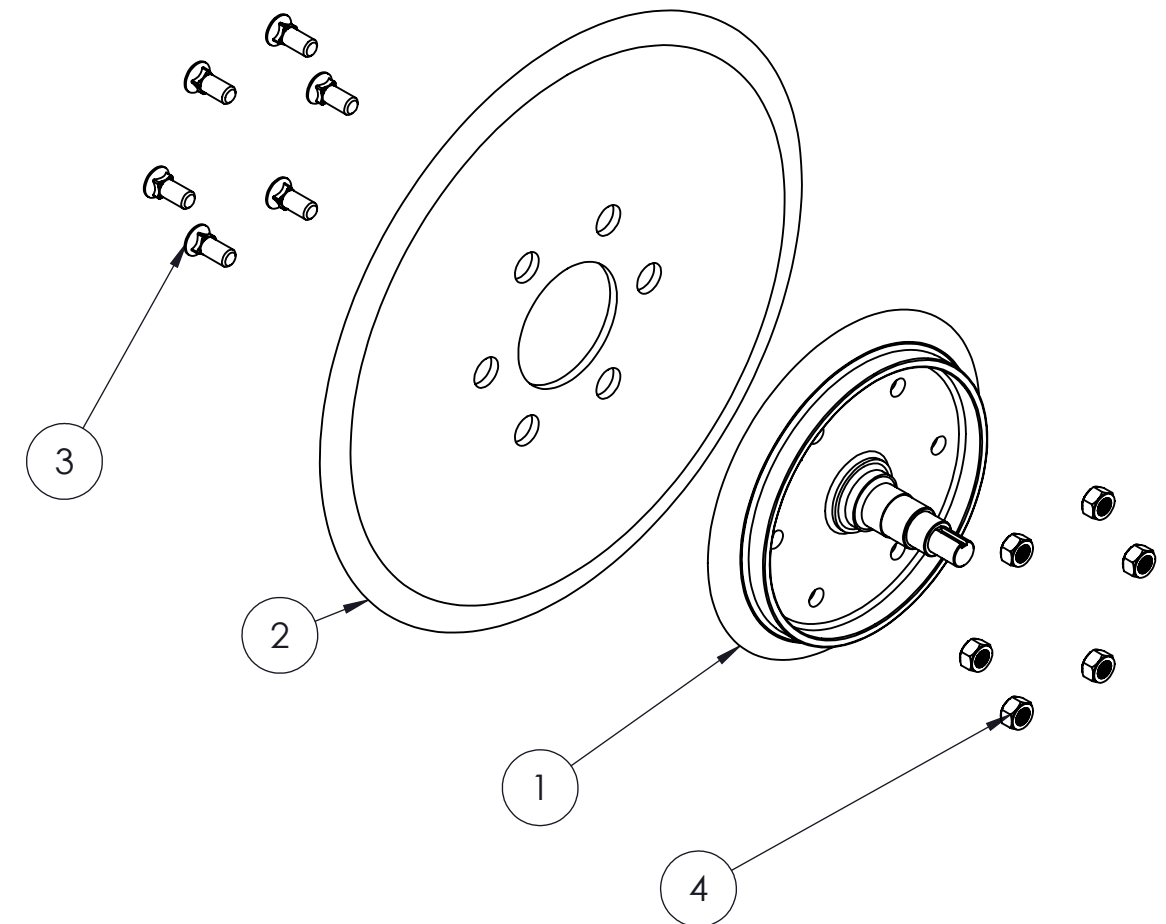
300266

ITEM NO.	PART NUMBER	DESCRIPTION	QTY.
1	9902-2	Bushing	2
2	101355	Wiper Wheel Arm	1
3	9803	1/4 x 3/4 Grooved Pin	1
4	9988R02	Wiper Wheel	1
5	102181	Eccentric Adjuster Bushing	1
6	102182	Eccentric Hex Adjuster	2
7	90051	1/2-13 x 3/4 HHCS	1
8	9003	1/2 Flat Washer	1



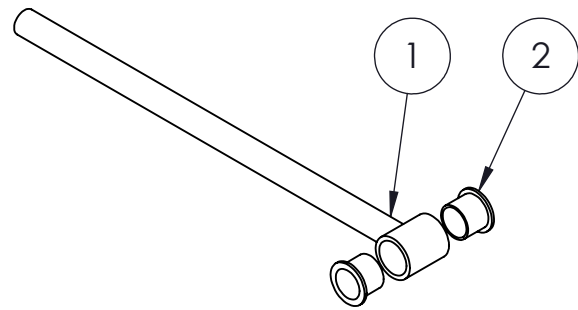
301317

ITEM NO.	PART NUMBER	DESCRIPTION	QTY.
1	101353	Machined Spindle Casting	1
2	9901	Blade	1
3	9911R01	1/2-13 x 1.5 Plow Bolt	6
4	9007	1/2-13 Nut	6



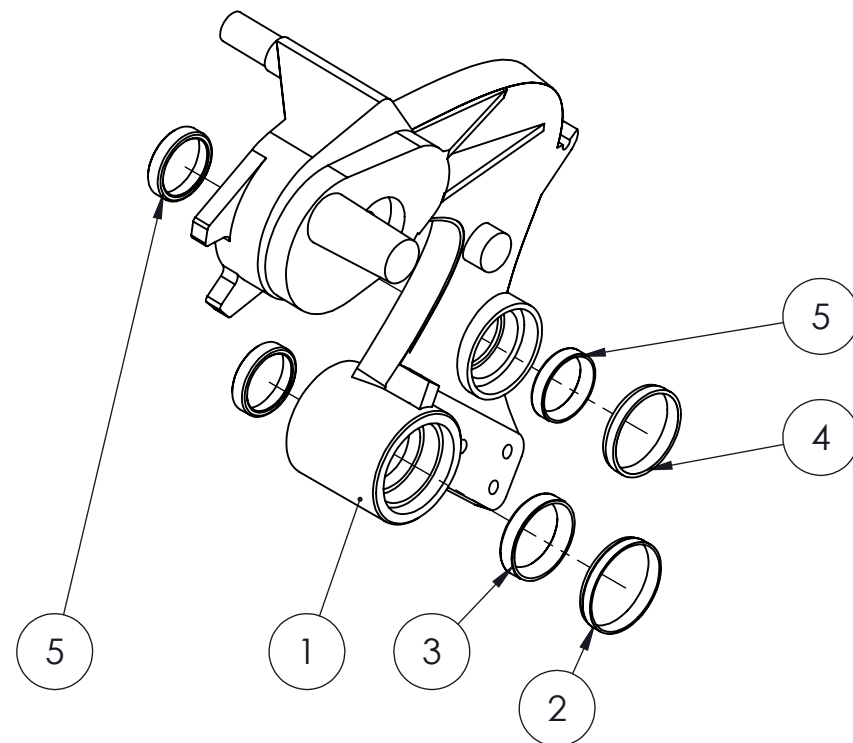
300267

ITEM NO.	PART NUMBER	DESCRIPTION	QTY.
1	200474	Push Rod Weldment	1
2	9902-3	Bushing	2



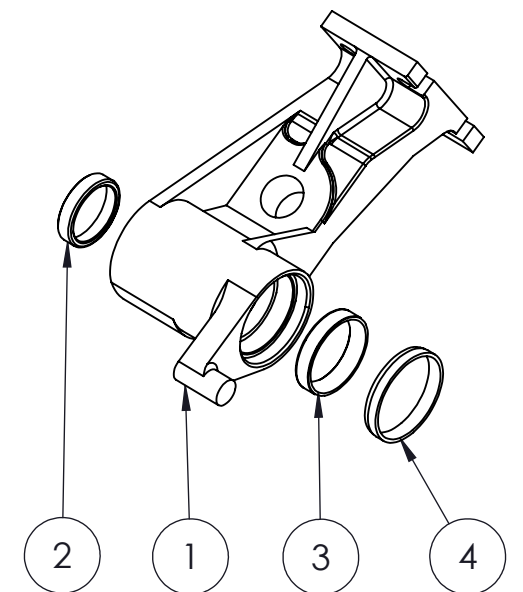
300413R

ITEM NO.	PART NUMBER	DESCRIPTION	QTY.
1	101576R	Main Body	1
2	9909_r2	Seal	1
3	9539	Bearing Cup	1
4	9018	Plastic Ring	1
5	9015	Bearing Cup	3



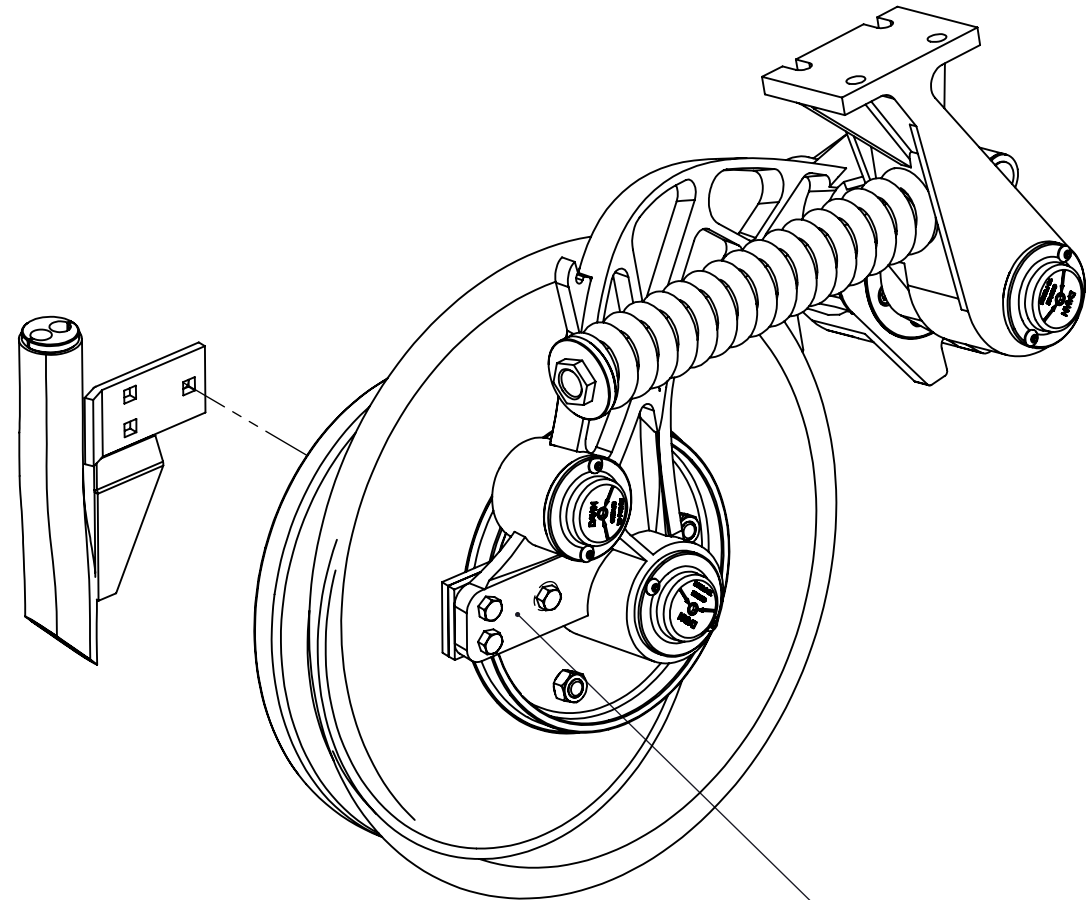
300320r2

ITEM NO.	PART NUMBER	DESCRIPTION	QTY.
1	101578R	Pivot Body	1
2	9015	Bearing Cup	1
3	9539	Bearing Cup	1
4	9909	Seal	1



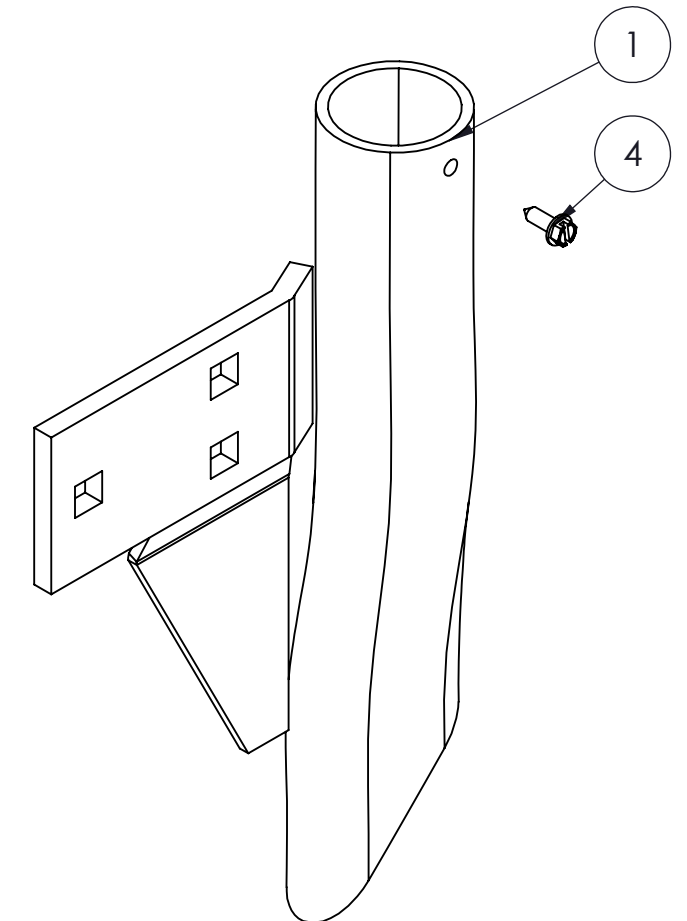
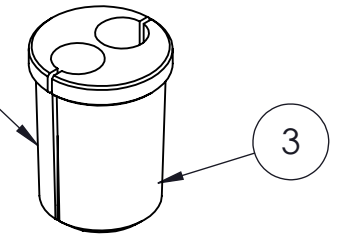
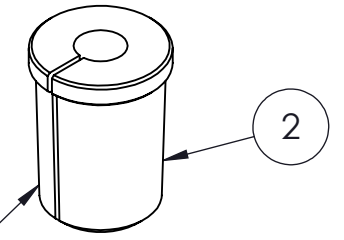
Fertilizer Options

ITEM NO.	PART NUMBER	DESCRIPTION	QTY.
1	200470	Dry Fertilizer Boot	1
2	101704	Plastic Insert To Use One Liquid Tube	1
3	101704-2	Plastic Insert To Use Two Liquid Tubes	1
4	90279	#8 x 1/2 Sheet Metal Screw	1



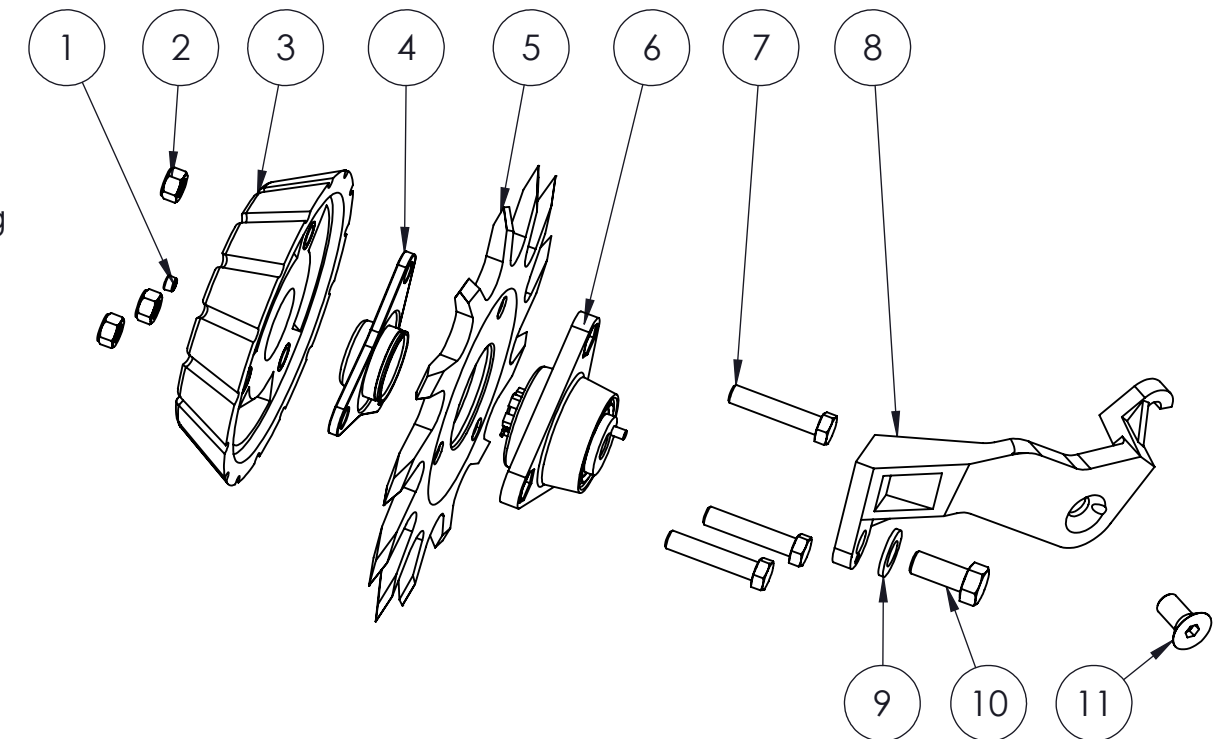
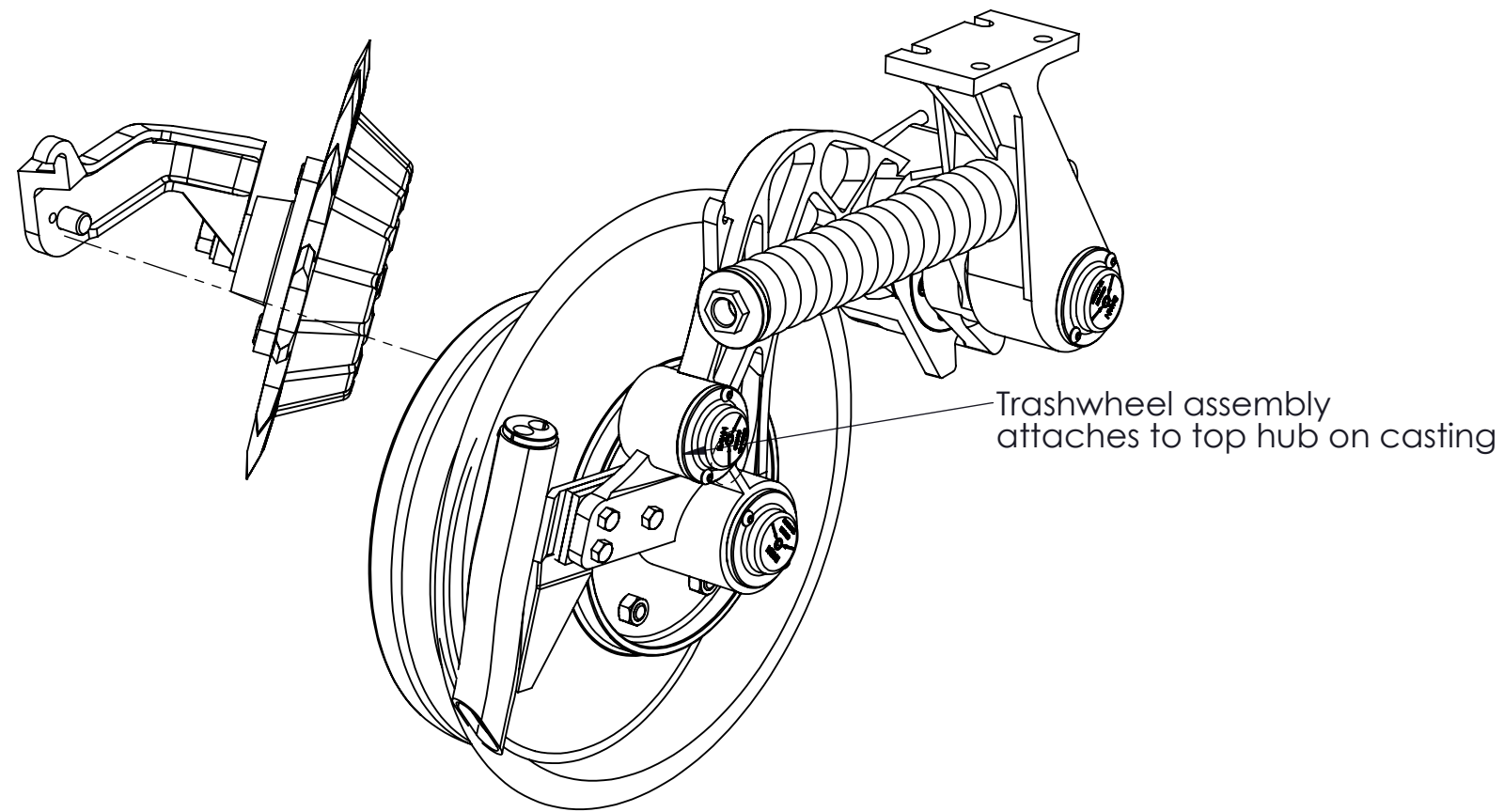
Boot gets gets affixed here.
Adjust the three bolts to get
desired angled for boot

Can only use one at a time

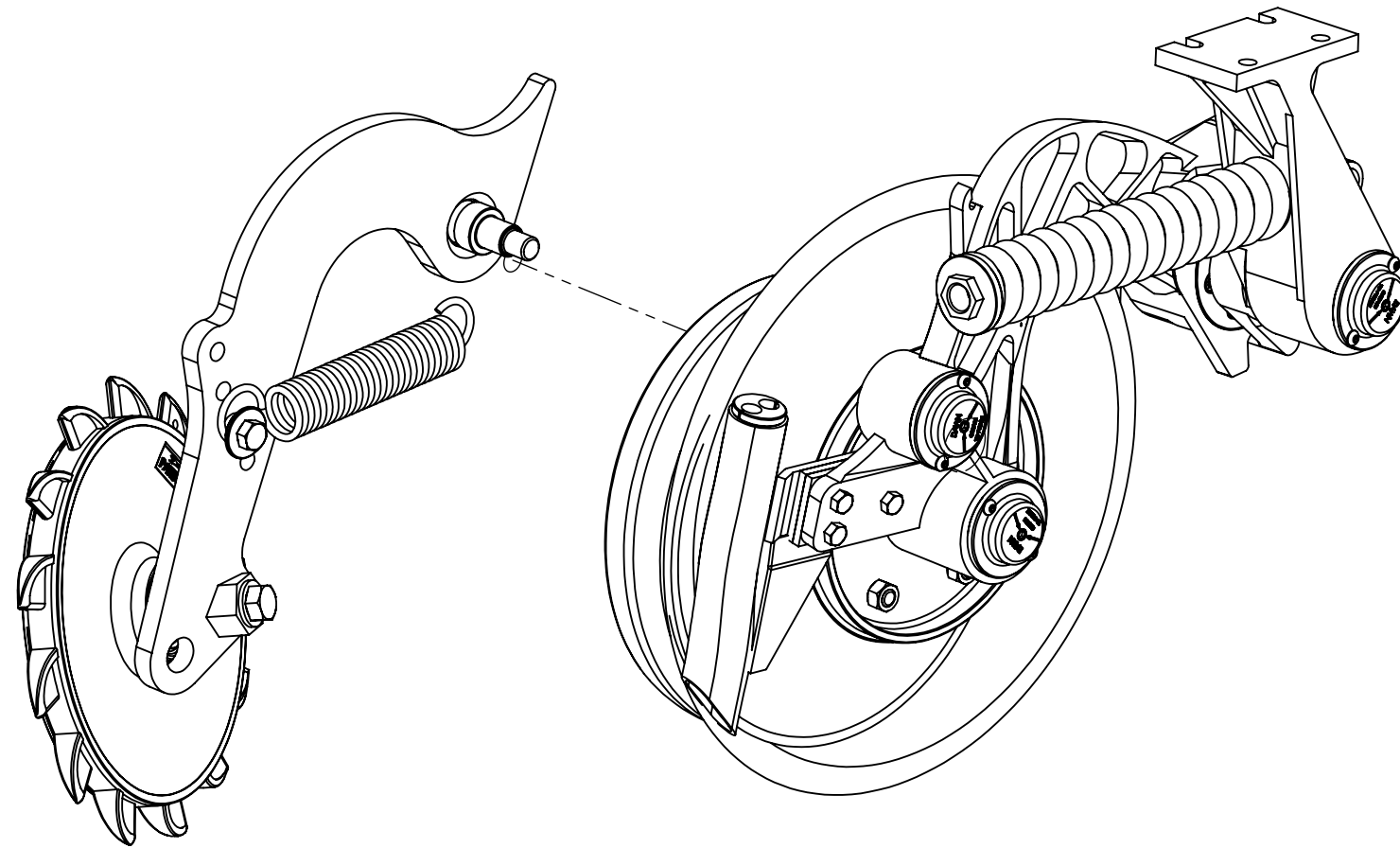


3004

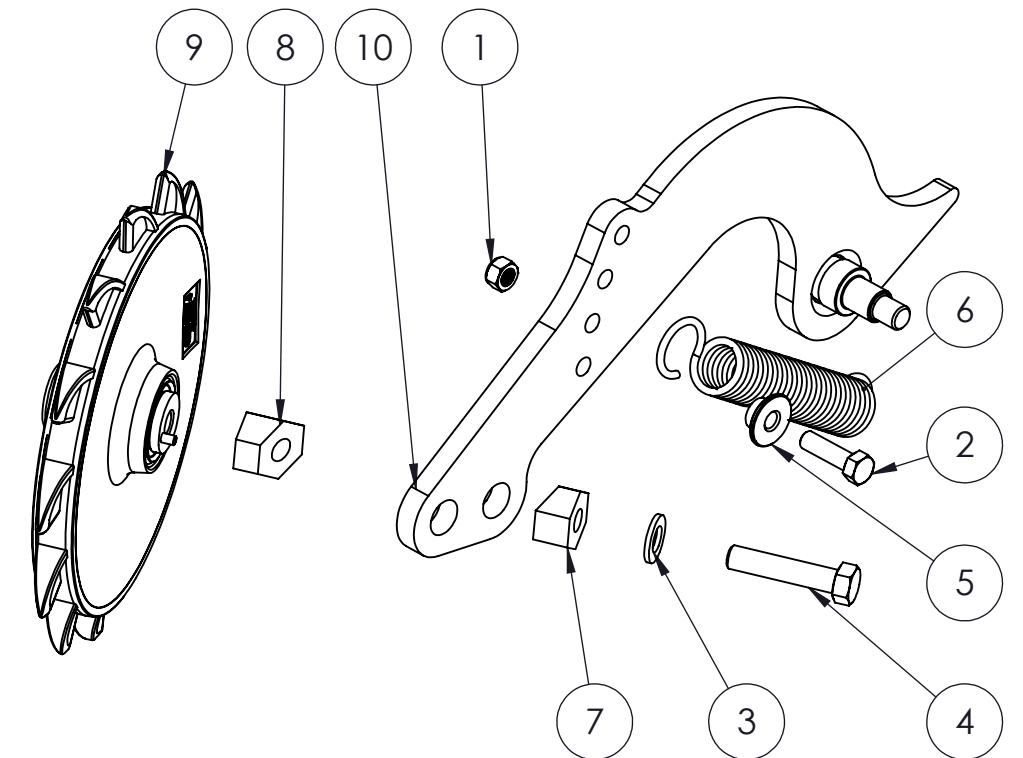
ITEM NO.	PART NUMBER	DESCRIPTION	QTY.
1	9785	Pipe Plug	1
2	9007_R1	1/2-13 Flange Lock Nut	3
3	101782_r1	Depth Band with Metal Inserts	1
4	100949_r2	Super Cap	1
5	101550	Trashwheel	1
6	400014R01	Hub Assembly	1
7	9339	1/2-13 x 2.5 HHCS	3
8	101577R	Pivot Body	1
9	9032	5/8 Washer	1
10	9101	5/8-11 x 1.5 HHCS	1
11	9971	5/8-11 x 1.25 FSHCS	1



3005 with kit 400112



ITEM NO.	PART NUMBER	DESCRIPTION	QTY.
1	9007R01	1/2-13 Nut	1
2	9088	1/2-13 x 1.75 HHCS	1
3	9032	5/8 Flat Washer	1
4	9840	5/8-11 x 3.0 HHCS	1
5	100095	Step Bushing	1
6	100096	Tension Spring	1
7	101964	Angled Hex Adjuster	1
8	101963	Angled Hex Adjuster	1
9	1220	Curvetine II Closing Wheel	1
10	200869R_R1	Pivot Body	1



3005 with Kit 300384

ITEM NO.	PART NUMBER	DESCRIPTION	QTY.
1	200869R_R1	Pivot Body	1
2	90200	3/4 Shoulder Bolt	1
3	101963_H	Angled Hex Adjuster	4
4	1220RH	Curvetine II Closing Wheel	1
5	1220	Curvetine II Closing Wheel	1
6	200915	Walking Beam Weldment	1
7	9032	5/8 Flat Washer	1
8	9142	5/8-11 nut	1
9	9840	5/8-11 x 3.0 HHCS	1
10	90144	HHCS 5/8-11 X 3.0 GR 8 ZN- LH	1
11	90201	Bushing	1

