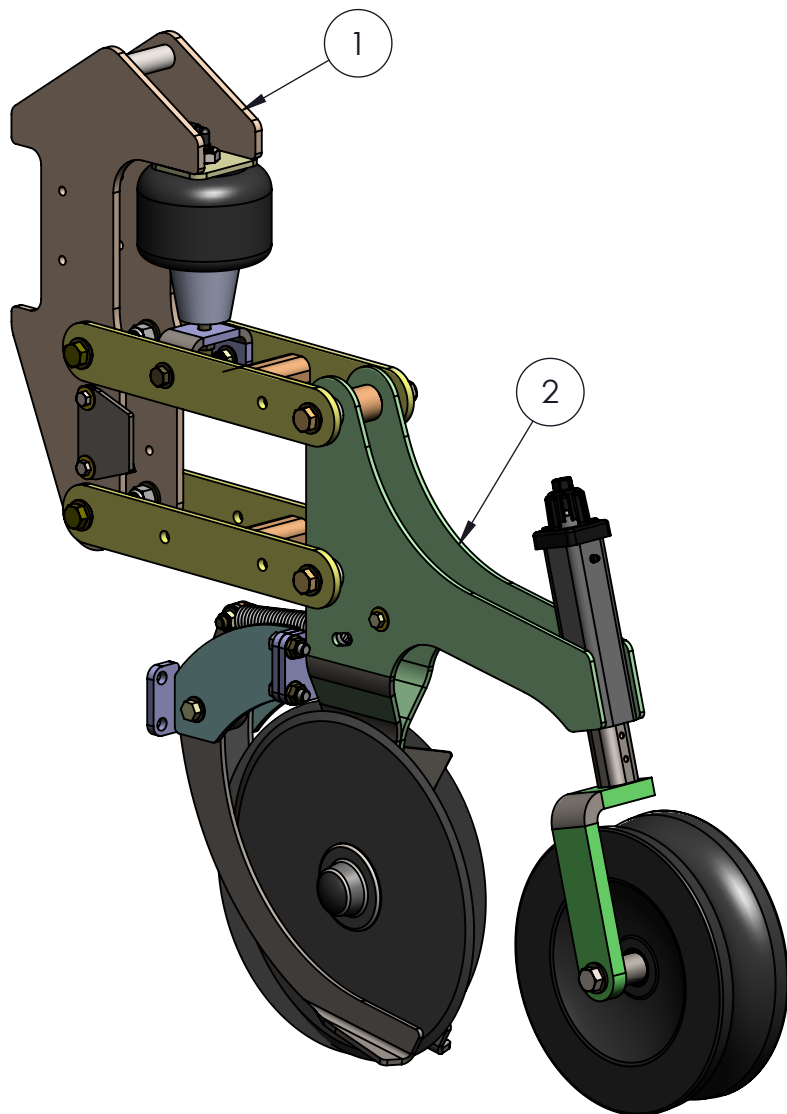


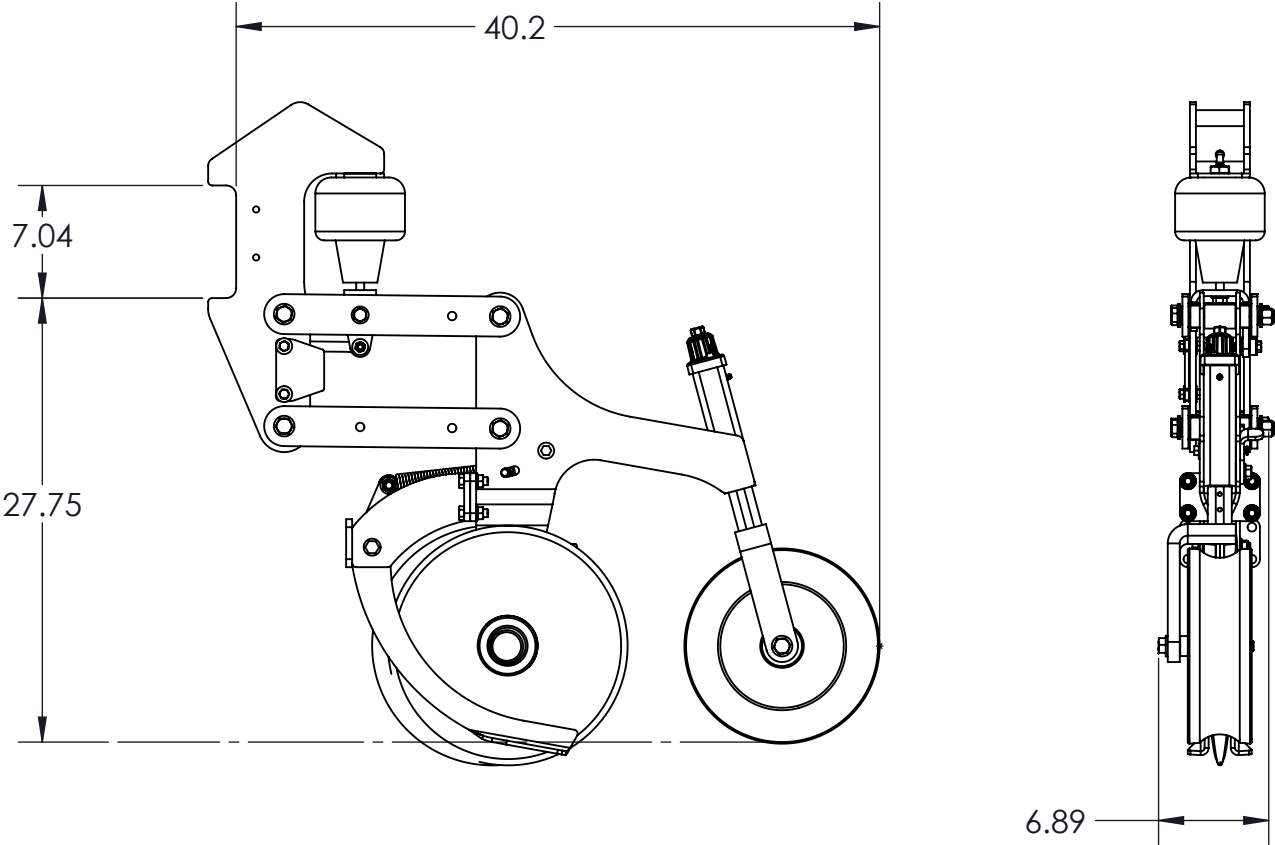
ITEM NO.	PART NUMBER	DESCRIPTION	QTY.	REVISIONS				
				REV	DESCRIPTION	ECO	REVISION BY	REVISION DATE
1	300685	KIT DUO 3 MNT/LINK STD	1					
2	300688R	DUO 3 FIRING SHANK AS	1					



Note: This kit does not include mount kit or seed tube  
See Kit assemblies for additional part information

UNLESS OTHERWISE SPECIFIED:  ALL DIMENSIONS ARE IN INCHES TOLERANCES: ONE PLACE DECIMAL= $\pm .06$ TWO PLACE DECIMAL= $\pm .03$ THREE PLACE DECIMAL= $\pm .015$	DRAWN BY: JML	DATE: 06/08/2017	<b>DAWN</b> <sup>®</sup> EQUIPMENT COMPANY BOX 497 SYCAMORE, ILLINOIS 60178 USA	
	CHECKED:	DATE:	TITLE: DUO 3, RIGHT HAND, STD	
PLEASE NOTE:  THIS DRAWING IS THE PROPERTY OF THE DAWN EQUIPMENT COMPANY AND IS NOT TO BE USED FOR ANY PURPOSE DETRIMENTAL TO ITS INTEREST. ALL DESIGN RIGHTS ARE RESERVED.	APPROVED:	DATE:	DWG. NO. 5064R	
	MATERIAL: Material <not specified>		SCALE: 1:8	WEIGHT: 135.481

REVISIONS				
REV	DESCRIPTION	ECO	REVISION BY	REVISION DATE




UNLESS OTHERWISE SPECIFIED:  ALL DIMENSIONS ARE IN INCHES TOLERANCES: ONE PLACE DECIMAL= ±.06 TWO PLACE DECIMAL= ±.03 THREE PLACE DECIMAL= ±.015	DRAWN BY:	DATE:	<div> <div>DAWN<sup>®</sup></div> <div>EQUIPMENT COMPANY</div> <div>BOX 497 SYCAMORE, ILLINOIS 60178 USA</div> </div>	
	JML	06/08/2017		
	CHECKED:	DATE:	TITLE: DUDS RIGHT HAND STD	
PLEASE NOTE:	APPROVED:	DATE:	DWG. NO. 5064R	
THIS DRAWING IS THE PROPERTY OF THE DAWN EQUIPMENT COMPANY AND IS NOT TO BE USED FOR ANY PURPOSE DETRIMENTAL TO ITS INTEREST. ALL DESIGN RIGHTS ARE RESERVED.	MATERIAL: Material <not specified>		SCALE: 1:12	WEIGHT: 135.481

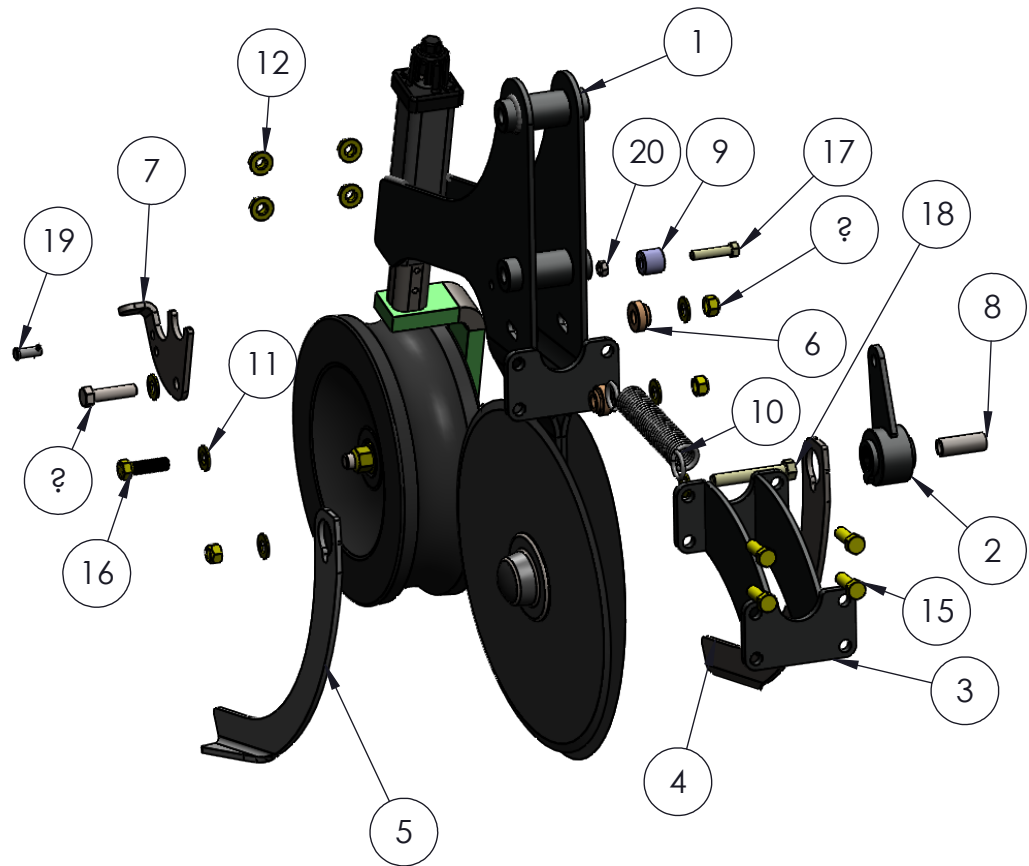
ITEM NO.	PART NUMBER	DESCRIPTION	QTY.
1	201134	WLDMNT, DUOSEED MOUNT	1
2	300679	LINK AS, DUO 3 STANDARD	2
3	102880	BUSHING, DUOSEED TOP LINK	8
4	9078	HHCS 5/8-11 X 2 GR8 ZN	4
5	9032	FLAT WASHER 5/8	12
6	9142	5/8-11 ALL METAL LOCK NUT	6
7	103112	PLATE DUO SHORT LINK STOP	1
8	103118	PLATE, DUO 3 CRADLE	1
9	103085	SPACER, 1580 LINK PIVOT	2
10	90045	FW, 3/8 ZINC	11
11	90495	3/8"-16 ALL METAL LOCKNUT	4
12	9918	HHCS 3/8-16 X 1.5	4
13	102874B	PLATE, DUOSEED CRADLE	1
14	9003	FW, 1/2 ZINC YELLOW	5
15	9088	HHCS, 1/2-13 X 1.75 GR 8	2
16	90417	1/2-13 CRIMP LOCK NUT	2
17	90131	Airbag	1
18	9177	3/4 NUT JAM	1
19	90387	ADAPTER, 1/8 NPT 1/4 PUSH	1
20	9289	HHCS 5/8-11 X 6	2
21	9046	HHCS 1/2 -13 X 1.25	1

REVISIONS				
REV	DESCRIPTION	ECO	REVISION BY	REVISION DATE


  
  

UNLESS OTHERWISE SPECIFIED:		DRAWN BY:	DATE:	 BOX 497 SYCAMORE, ILLINOIS 60178 USA
ALL DIMENSIONS ARE IN INCHES TOLERANCES: ONE PLACE DECIMAL= ±.06 TWO PLACE DECIMAL= ±.03 THREE PLACE DECIMAL= ±.015		JML	06/08/2017	
PLEASE NOTE:		CHECKED:	DATE:	TITLE:
THIS DRAWING IS THE PROPERTY OF THE DAWN EQUIPMENT COMPANY AND IS NOT TO BE USED FOR ANY PURPOSE DETRIMENTAL TO ITS INTEREST. ALL DESIGN RIGHTS ARE RESERVED.		APPROVED:	DATE:	KIT DUO 3 MNT/LINK STD
		MATERIAL: Material <not specified>		DWG. NO.
				300685
				SCALE: 1:8
				WEIGHT: 57.659

ITEM NO.	PART NUMBER	DESCRIPTION	QTY.
1	300687L	DUO 3 SHANK ASSEMBLY	1
2	300681	PRESS AS, DUO 3 FIRM PIVO	1
3	201151	WLDMNT, DUO 3 FIRM AS,	1
4	103127L	PLATE, DUO 3 FIRM ARM LH	1
5	103127R	PLATE, DUO 3 FIRM ARM RH	1
6	103131	BUSHING, STEP DUO 3 SPRNG	2
7	103132	PLATE DUO 3 SPRING ADJUST	1
8	103141	BUSHING DUO 3 FIRM PIVOT	1
9	103142	SPACER, DUO 3 SEED TUBE	1
10	100241	SPRING, EXTENSION 1.25	1
11	9003	FW, 1/2 ZINC YELLOW	6
12	9007-R1	FLANGE NUT 1/2-13	4
13	90417	1/2-13 CRIMP LOCK NUT	3
14	HBOLT 0.5000-13x2x1.25-N		1
15	9079	HHCS 1/2-13 x 1.5	4
16	9088	HHCS, 1/2-13 X 1.75 GR 8	1
17	91068	HHCS, 3/8-16 X 1.75	1
18	91069	HHCS, 1/2-13 X 3.25	1
19	91073	PIN, CLEVIS, 3/8 X 3/4	1
20	90495	3/8"-16 ALL METAL LOCKNUT	1
21	300600	KIT, DUOSEED CLOSING AS	1



REVISIONS				
REV	DESCRIPTION	ECO	REVISION BY	REVISION DATE

UNLESS OTHERWISE SPECIFIED:		DRAWN BY:	DATE:	 BOX 497 SYCAMORE, ILLINOIS 60178 USA
ALL DIMENSIONS ARE IN INCHES TOLERANCES: ONE PLACE DECIMAL= ±.06 TWO PLACE DECIMAL= ±.03 THREE PLACE DECIMAL= ±.015		JML	06/05/2017	
		CHECKED:	DATE:	TITLE: DUO 3 FIRMING SHANK AS
PLEASE NOTE:		APPROVED:	DATE:	DWG. NO. 300688L
THIS DRAWING IS THE PROPERTY OF THE DAWN EQUIPMENT COMPANY AND IS NOT TO BE USED FOR ANY PURPOSE DETRIMENTAL TO ITS INTEREST. ALL DESIGN RIGHTS ARE RESERVED.		MATERIAL: Material <not specified>		SCALE: 1:8 WEIGHT: 80.008